



HSBC EQUITY QUANTITATIVE RESEARCH

## Portfolio Maximum Entropy and Sampling Error Control

**Ely Klepfish\***

Quantitative Analyst

HSBC Bank plc

+44 20 799 16719 [ely.klepfish@hsbcib.com](mailto:ely.klepfish@hsbcib.com)

NAG Wilmott Quant Event

23 June 2011

\*Employed by a non-US affiliate of HSBC Securities (USA) Inc, and is not registered/qualified pursuant to FINRA regulations

View HSBC Global Research at: <http://www.research.hsbc.com>

Issuer of report: HSBC Bank plc

**Disclaimer & Disclosures**

This report must be read with the disclosures and the analyst certifications in the Disclosure appendix, and with the Disclaimer, which forms part of it

# Diversification – Naïve, Classical, Quantum

## ➤ Naïve

“1/3 in Land, 1/3 in merchandise, 1/3 in ready to hand” – Rabbi Isaak bar Aha (IV century AD, Babylonian Talmud - quoted in V De Miguel, L Garlappi, R Uppal, see reference below)– **A craftsman solution**

## ➤ Classical – why investing equally in *good* and *bad* ? *Experience + Theory = Science*

*Science + Efficiency = Industry*

U. S. AIR FORCE  
PROJECT RAND  
RESEARCH MEMORANDUM

THE OPTIMIZATION OF QUADRATIC FUNCTIONS  
SUBJECT TO LINEAR CONSTRAINTS

Harry Markowitz

RM-1438

21 February 1955

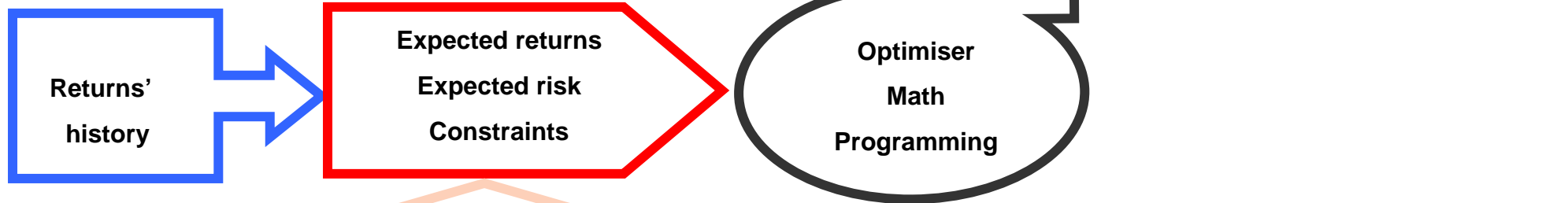
## ➤ Quantum – the uncertainty is real (Principal reference – A K Bera, and S Y Park, S Y Optimal Portfolio Diversification Using the Maximum Entropy Principle. *Econometric Reviews*, v. 27, p 484, 2008)

## Optimisation – taking investment from craft to industry

- **Objective** – maximum future value of invested capital
  - The concept of efficiency – not all portfolios are equal, some are worse – those with the same expected return but with higher risk
  - Optimisation enables investors to avoid these unfortunate choices by selecting the among portfolios with the same expected return the one with the lowest risk
- **Optimisation inputs** – security **expected** returns, **estimated** risk return inter-dependence (covariance) – mainly **estimated** from **history**
- **Optimised portfolio** (in theory) – higher long-term returns, lower transaction costs, accommodates holding restrictions (keeps regulators and trustees happy)

# The conveyor belt assembly of investment industry

Harry Markowitz meets Henry Ford



Economics, portfolio theory,  
Risk modelling,  
Experience, wisdom



Source Wikimedia Commons

Efficient portfolio

## Post-modern portfolio theory

### Not a conspiracy of latent Luddites

- **Richard Michaud** (Financial Analyst Journal, 45, 1989) warns of MV optimisation's tendency to maximise the effects of the errors in the inputs
  
- **David Turkington** (Canadian Investment review 17 May 2010) although in favour of the optimised portfolio selection, acknowledges studies indicating that equal-weighted allocation of capital is intuitive and rewarding.
  
- **Victor DeMiguel, Lorenzo Garlappi, Raman Uppal** (Review of Financial Studies, 22 (5), 2009)  
Tested 14 models in 7 data sets and found no statistically significant Sharpe ratio outperformance relative to the equally weighted portfolio

## Sampling error – the core cause of the problem

Sampled returns represent inadequately the whole ensemble of possible returns.  
A sample selected at a different time, under different conditions  
might produce significantly different results

Unreliable estimation of input parameters for optimisation

Optimisers following wrong estimations recommend wrong holdings

Minimise dependency on sampling errors

## Limiting sampling errors – constraints

- **Constraints – limiting exposure – not following blindly the advice of the expected return versus expected risk selection**

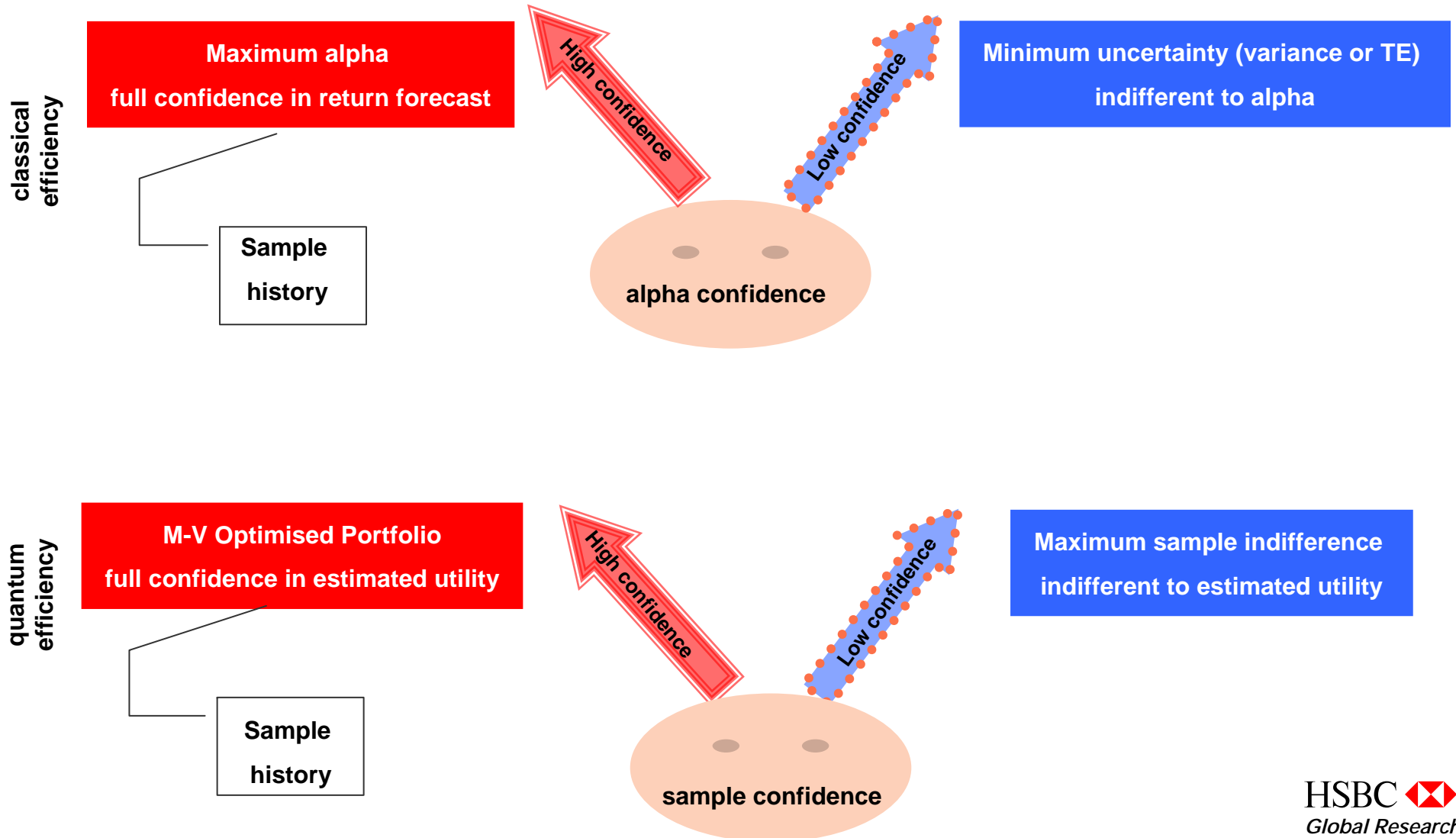
Return uncertainty requires the risk to be controlled. If not for the uncertainty then the highest expected return ought to be allocated the whole capital available

Holding constraints reflect uncertainty with respect to the estimation of risk (another way to say *uncertainty*)

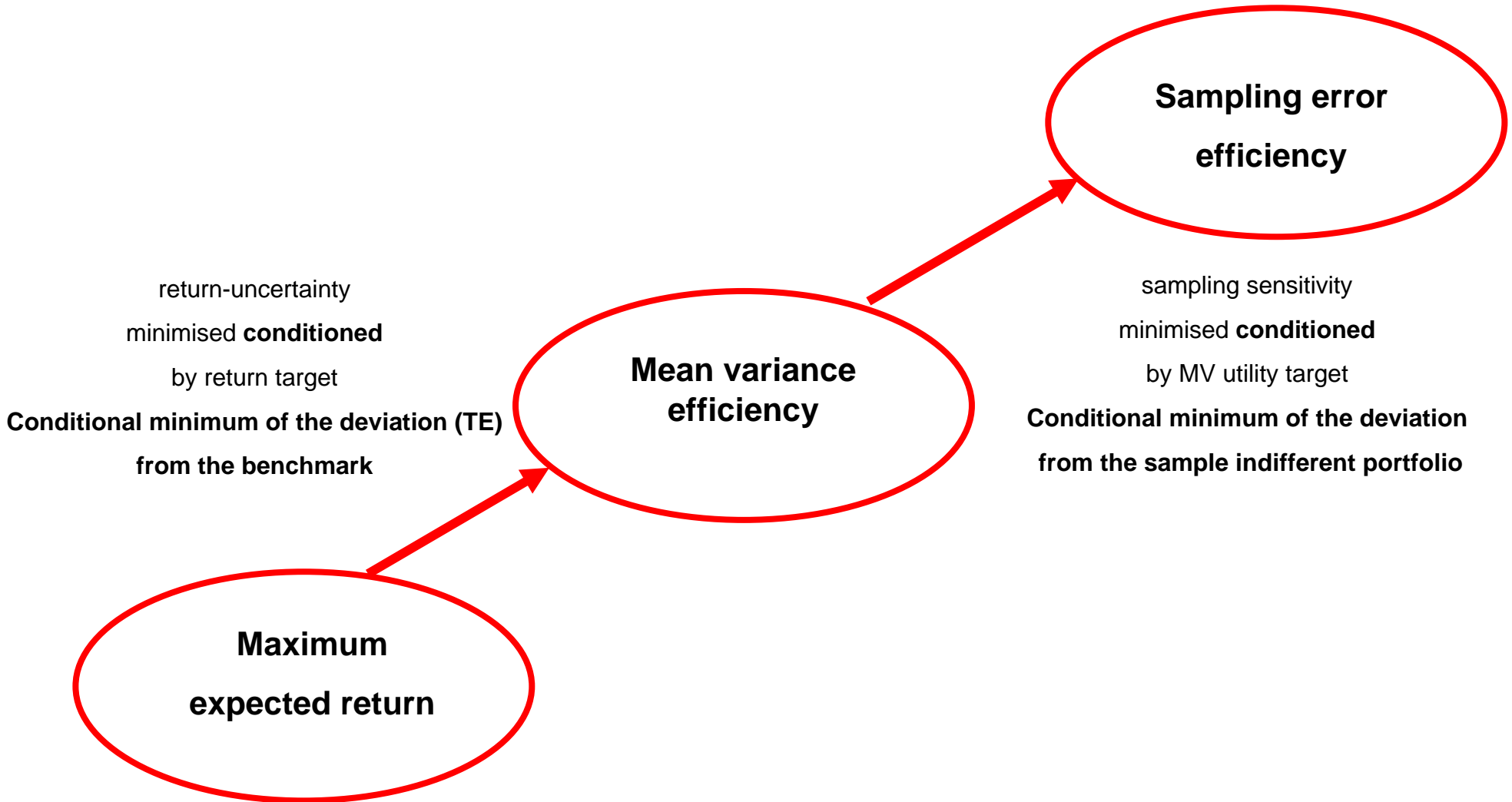
Equally-weighted diversification expresses ultimate disbelief in the estimate, including estimate of the uncertainty

- Jagannathan and Ma (The Journal of Finance, 58, 4, 2003) – **even imposition of wrong in population non-negativity constraints reduces the realised risk (for sample covariance matrix)**

# Taking uncertainty seriously – quantum correction



# Conditional optimisation defines efficiency



# Building blocks

- ❑ Measure of distance
- ❑ Definition of level of confidence
- ❑ Definition of the sampling-indifferent portfolio (shrinkage target)

## A measure of distance

- Bera and Park (2008) propose to use **Kullback-Leibler cross-entropy**

$$X(\mathbf{w}, \mathbf{q}) = \sum_i^N w_i \log\left(\frac{w_i}{q_i}\right)$$

optimised portfolio  $\mathbf{w}$  , shrinkage target  $\mathbf{q}$

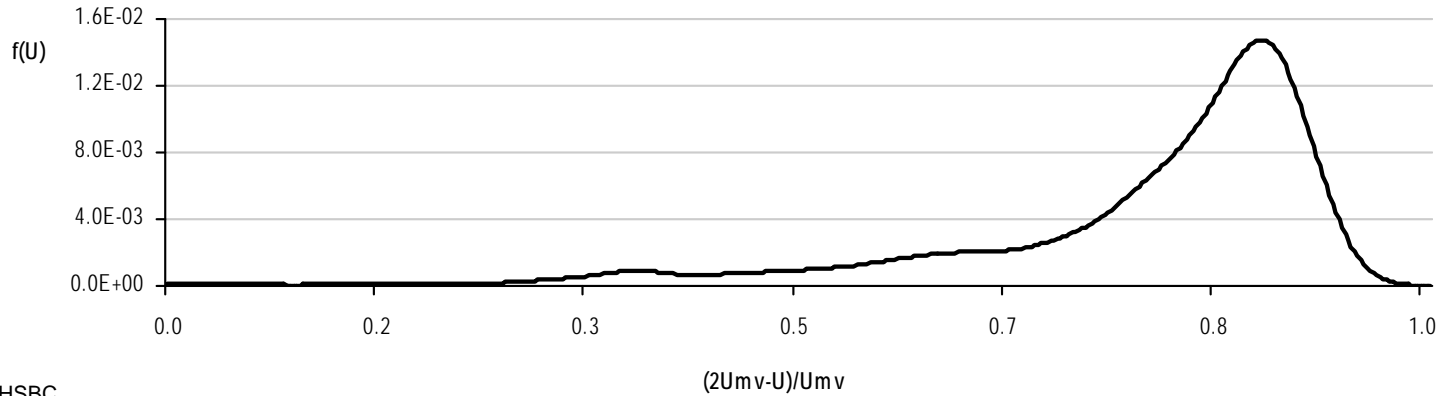
- The sum of weighted logarithms is never negative. It reaches zero for portfolio weights equal to the shrinkage target weights
- For an equally weighted shrinkage target  $X(\mathbf{w}, \mathbf{q})$  is the (-) Shannon information entropy
- Additive, global, sample-independent, risk-model independent
- Possible to generalise to short holdings

## Defining level of confidence

1. Estimate expected return and risk according to the sample
2. Generate re-sampling of the returns and for each of the re-sampled histories of returns estimate expected return and risk
3. Calculate the optimal mean variance portfolio for the empirical sample and for each of the bootstrap generated virtual histories
4. Substitute **empirical sample mean and variance-covariance into each set of portfolio weights and obtain re-sampling of mean-variance utility. By construction the largest utility is obtained for the optimisation weights of the empirical sample**
5. Estimate the distribution of the maximum utility values of item 4
6. Assess the utility value corresponding to the percentage of confidence – an inverse function of the cumulative distribution

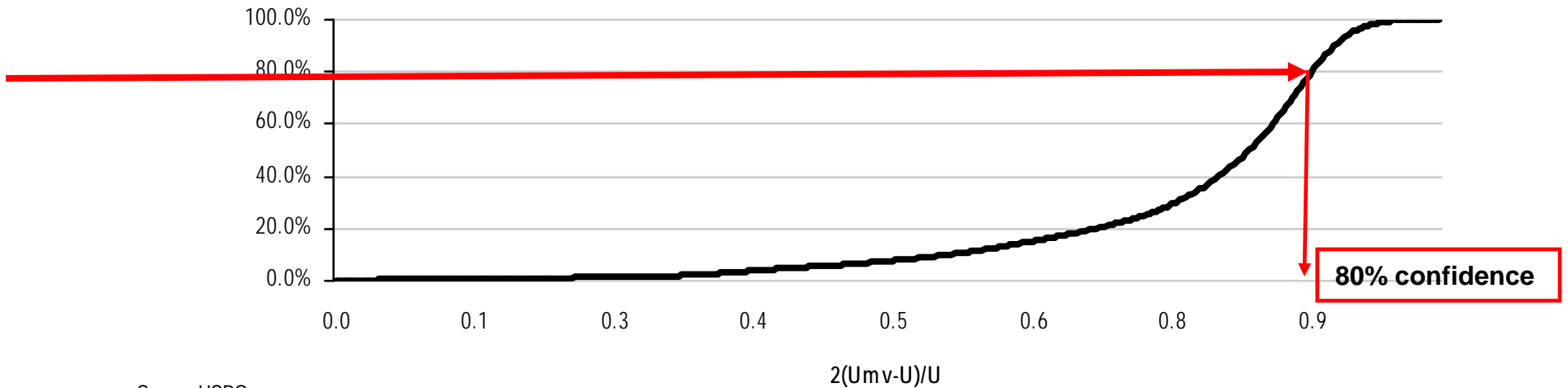
# Utility function distribution (from bootstrapping of a minimum variance solution)

Fig 1-a. Utility distribution density



Source HSBC

Fig 1-b. Cumulative distribution for confidence interval



Source HSBC

## Conditional minimisation of cross-entropy

- For a given shrinkage target  $q_i$  minimum cross entropy solution is given by

$$w_{iCE} = \arg \min_w \left[ \sum w_i \log \left( \frac{w_i}{q_i} \right) \right]$$

subject to the usual holding constraints and to an additional defined by the lowest acceptable value of utility (according to an investor's confidence)  $-U_0$

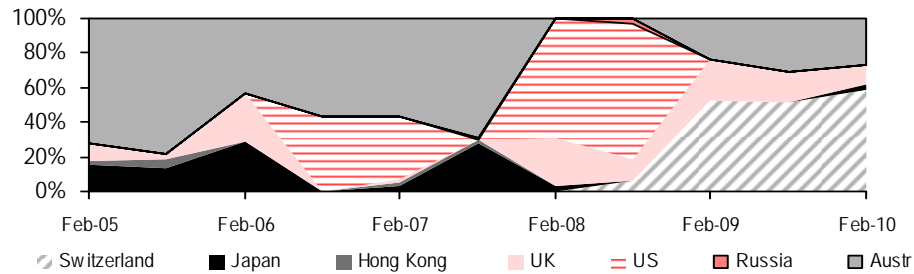
$$w_i \mu_i - \frac{\lambda}{2} w_i \Sigma_{ij} w_j \geq U_0; \quad (\mu, \Sigma) \text{ are the sample-estimated returns and covariance matrix}$$

The minimisation is done using NAG routine E04UC

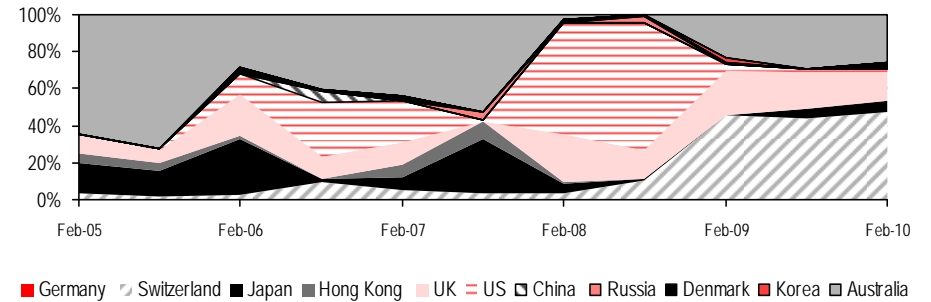
Special thanks for putting together the NAG toolbox for Matlab

# Diversification effect of conditional cross-entropy minimisation – country allocation – MSCI country equity indices, sample (60 m) - estimated covariance matrix

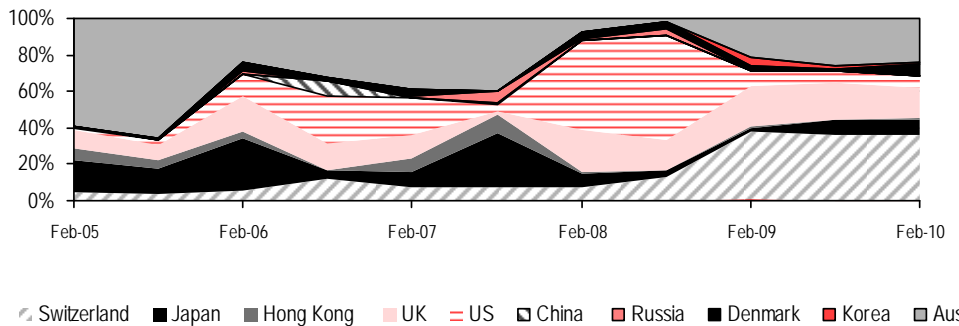
**Fig 2-a. MV solution**



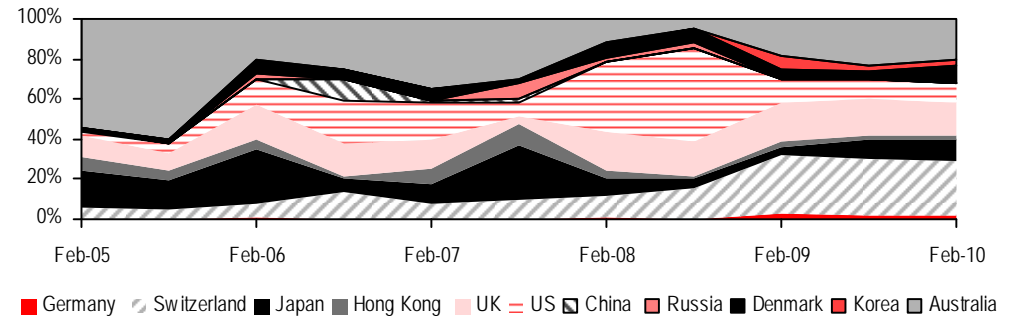
**Fig 2-b. 90% confidence**



**Fig 2-c. 75% confidence**



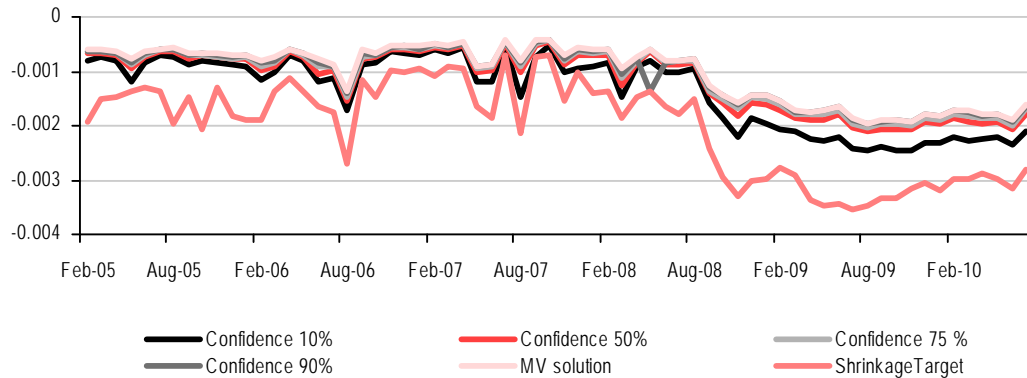
**Fig 2-d. 50% confidence**



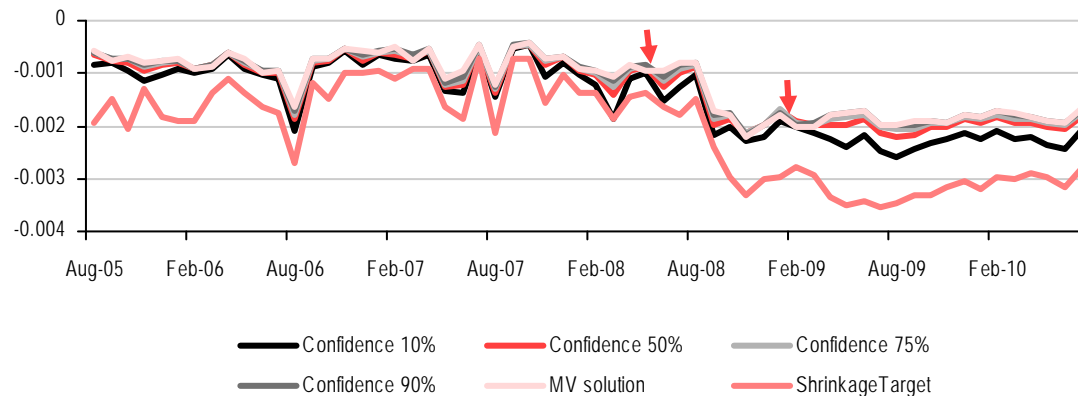
Source HSBC

# Small utility costs for increased diversification

**Fig 3-a. Estimated utility  
(minimum variance optimisation)**



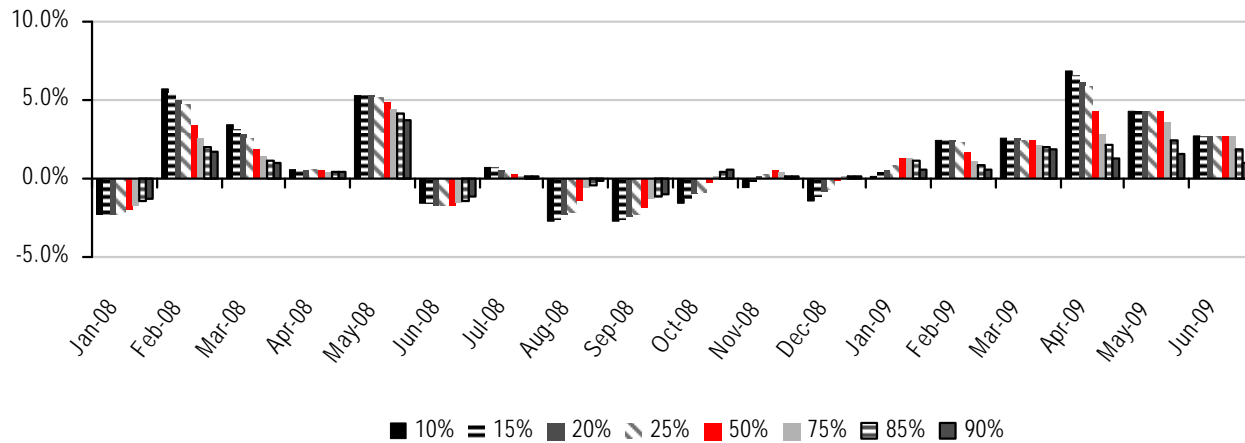
**Fig 3-b. 6 months after optimised rebalancing –  
lower confidence solutions closing the utility gap**



Source HSBC

Reduced downside risk – Mean-Variance optimisation and conditional minimum cross-entropy.  
Comparison of 6-month losses – (positive value – smaller loss)

**Fig 4. Conditional minimum cross-entropy (for stated confidence levels) vs Mean-Variance**

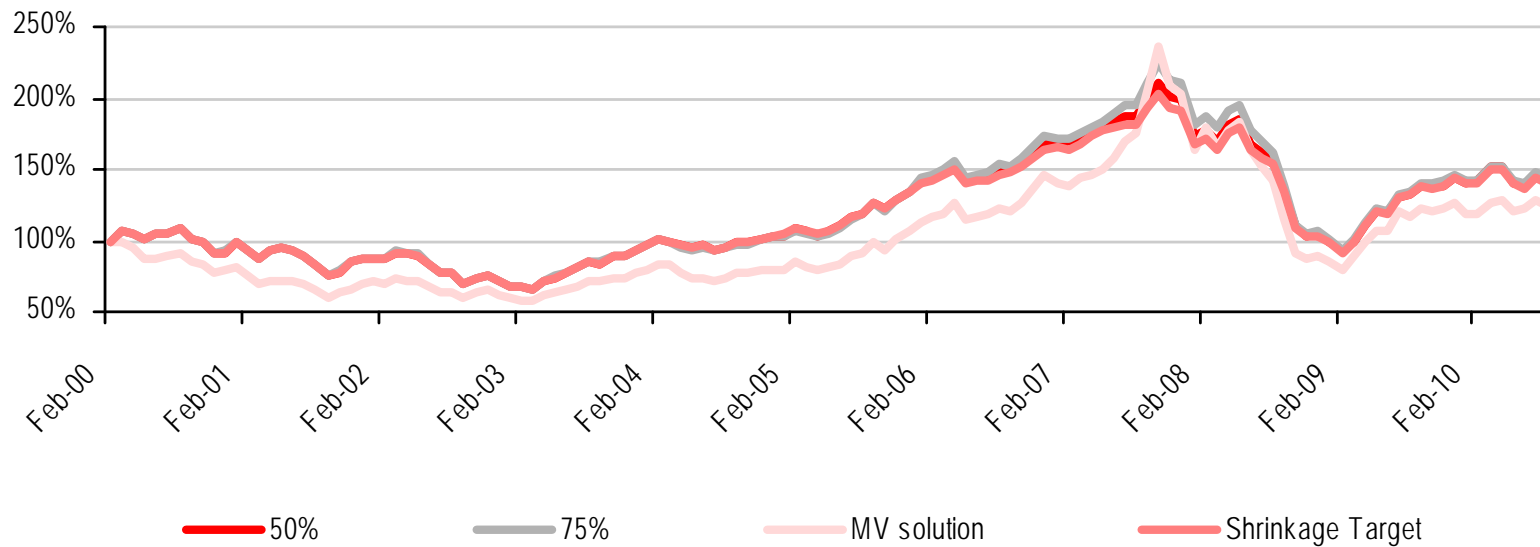


Source HSBC

# Beyond minimum risk

Fig 5. Ten year performance

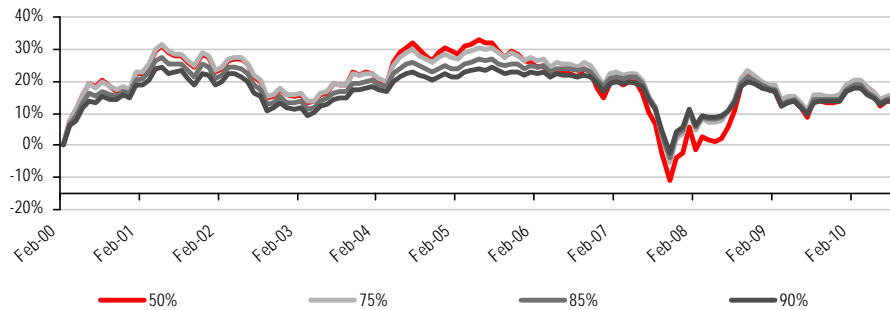
Mean-Variance optimisation with expected return defined as exponentially weighted mean of the past 60 months



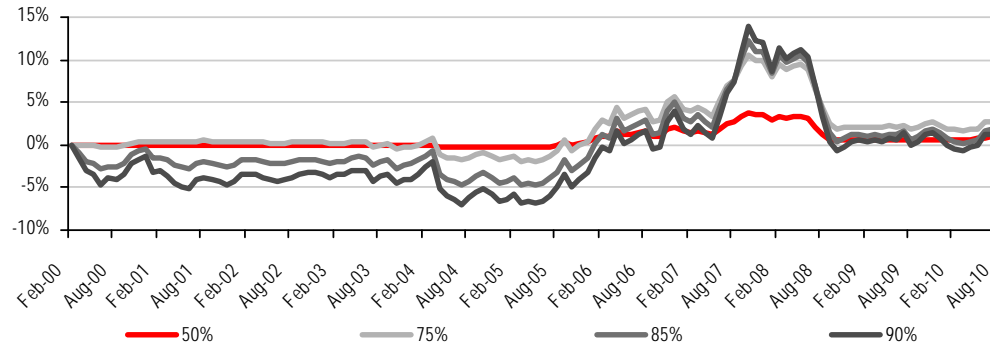
Source HSBC

# Minimum cross-entropy solution captures Mean-Variance gains and moderates its losses

**Fig 6-a. Minimum cross-entropy solution performance relative to MV solution**



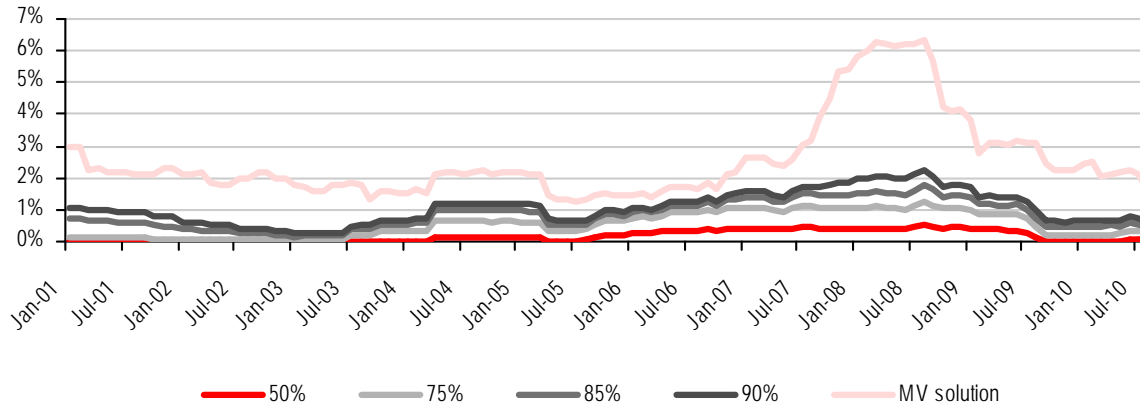
**Fig 6-b. Minimum cross-entropy solution performance relative to equally-weighted allocation**



Source HSBC

## Realised tracking error and information ratio relative to the equally weighted allocation

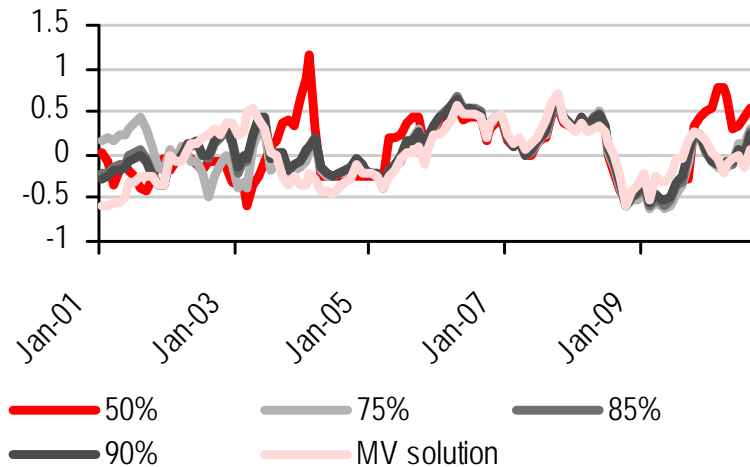
Fig 7-a. TE



Positive IR of the MV (useful sample information) is maintained in the minimum cross-entropy solution

Fig.7-b

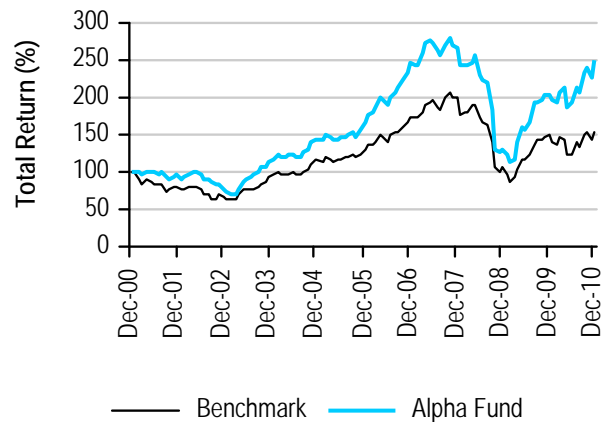
IR



## Stock level portfolio optimisation – a European Value-Momentum fund

- Return expectation – combined earnings yield and three months price momentum
- Benchmark weights for standard optimisation – DJ Stoxx 600
- Market cap-weighted benchmark underperforms Alpha (top decile selected) fund (Fig. 8)
- Comparison of Alpha with equally weighted allocation of Stoxx 600 constituents (EW) indicates negative market cap bias (Fig.9)

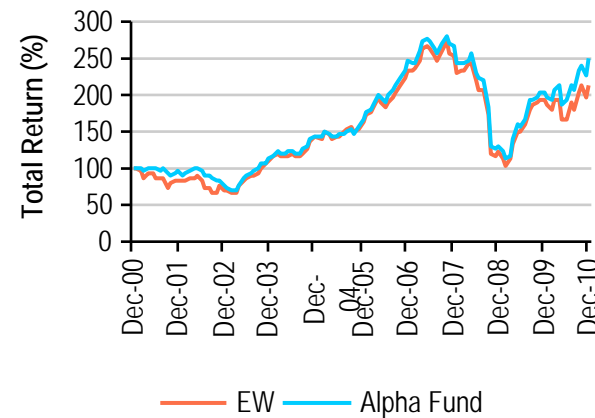
**Fig. 8**



	Benchmark	Alpha Fund
Average return p/a	4%	10%

Source: HSBC

**Fig. 9**



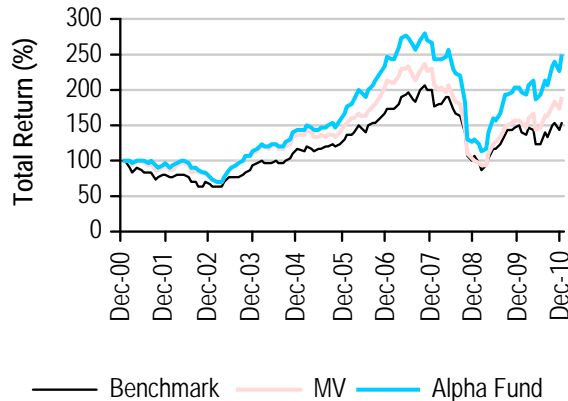
	EW	Alpha Fund
Average return p/a	8%	10%

Source: HSBC

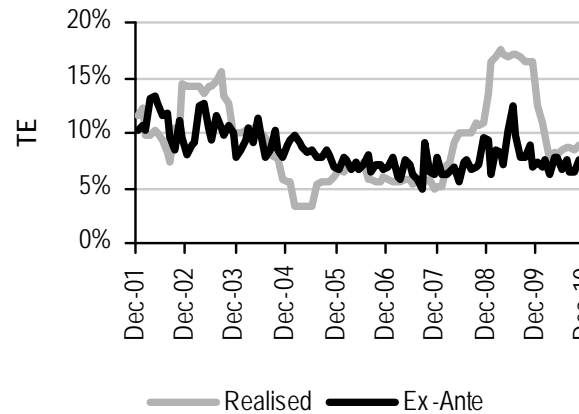
# Mean-variance optimisation

- Small enhancement of performance (Fig.10)
- High estimated tracking error, which nonetheless understates the realised error (Fig.11)
- Tuning to decrease tracking error will bring the performance even nearer to the weak benchmark

**Fig. 10**



**Fig. 11**



	Benchmark	MV	Alpha Fund
Average return p/a	4%	7%	10%

## Enhanced diversification with equally-weighted target

➤ Sample ‘*indifferent*’ target – equally weighted (weakening market cap bias and sample sensitivity)

➤ Utility limit 85% of the mean-variance optimised portfolio

➤ CE solution – minimum (*cross-entropy*) distance to the equally weighted target that satisfies at least 85% of mean-variance (maximum possible) utility

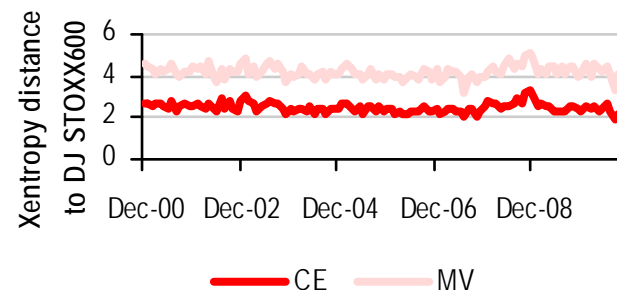
➤ Portfolio variance is estimated using factor risk model (Northfield).

➤ Minimum required utility limit is arbitrary. Could not re-generate risk model for re-sampled returns

➤ From previous example – higher limit corresponds to higher confidence, maximum utility – MV solution 100% confidence

➤ Outlook for future research – shrunk (*e.g.* Ledoit-Wolf method) sample covariance matrix

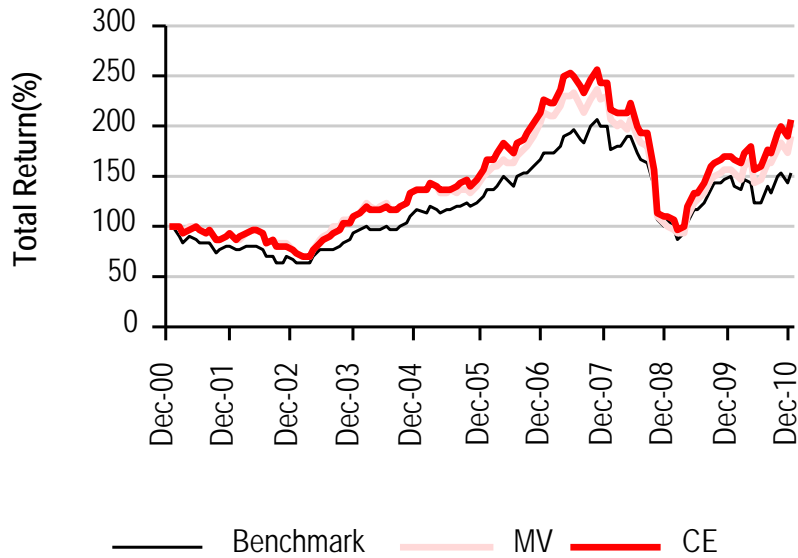
Fig. 12 – CE solution closer to the Stoxx DJ 600 benchmark



Source: HSBC

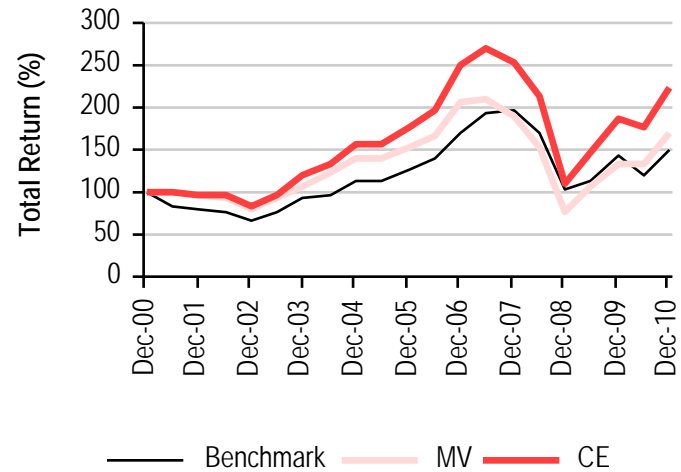
# Performance – short and long term

**Fig 13-a.**  
**1 m re-balancing**



	Benchmark	MV	CE
Average return p/a	4%	7%	8%

**Fig. 13-b.**  
**6 m re-balancing**

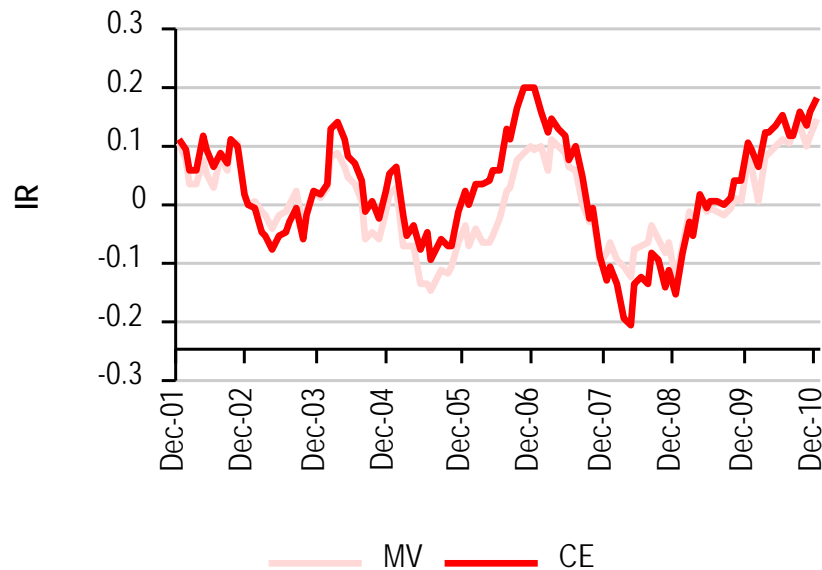


	Benchmark	MV	CE
Average return p/a	4%	5%	8%

# Alpha information maintained

- The proposed solution maintains essential stock selection and risk modelling information

**Fig 14 – Realised** information ratio, for monthly returns



Source: HSBC

# Summary

**I. Ideology** – extension of Markowitz’ programme – equilibrium between the desired and the feared, between classical efficiency and indifference to estimation errors;

first quantum correction (hopefully)

**II. Practicality**

1. Introduction of a sample independent measure of difference between two distributions of capital

2. Shrinkage applied directly to portfolio weights – can be used in testing and comparing risk models

3. Strict multiple holding constraints can be replaced by a single **GLOBAL** limit on cross-entropy  
(a straightforward extension of optimiser objective function)

**III. Results**

1. Enhanced diversification by introducing a single global constraint on a minimum acceptable value of utility

2. Preservation of the essential alpha information

3. Reduction of realised risk and enhanced out-of-sample performance

# Disclosure appendix

## Analyst Certification

The following analyst(s), economist(s), and/or strategist(s) who is(are) primarily responsible for this report, certifies(y) that the opinion(s) on the subject security(ies) or issuer(s) and/or any other views or forecasts expressed herein accurately reflect their personal view(s) and that no part of their compensation was, is or will be directly or indirectly related to the specific recommendation(s) or views contained in this research report: Elyakum Klepfish

## Important Disclosures

This document has been prepared and is being distributed by the Research Department of HSBC and is intended solely for the clients of HSBC and is not for publication to other persons, whether through the press or by other means.

This document is for information purposes only and it should not be regarded as an offer to sell or as a solicitation of an offer to buy the securities or other investment products mentioned in it and/or to participate in any trading strategy. Advice in this document is general and should not be construed as personal advice, given it has been prepared without taking account of the objectives, financial situation or needs of any particular investor. Accordingly, investors should, before acting on the advice, consider the appropriateness of the advice, having regard to their objectives, financial situation and needs. If necessary, seek professional investment and tax advice.

Certain investment products mentioned in this document may not be eligible for sale in some states or countries, and they may not be suitable for all types of investors. Investors should consult with their HSBC representative regarding the suitability of the investment products mentioned in this document and take into account their specific investment objectives, financial situation or particular needs before making a commitment to purchase investment products.

The value of and the income produced by the investment products mentioned in this document may fluctuate, so that an investor may get back less than originally invested. Certain high-volatility investments can be subject to sudden and large falls in value that could equal or exceed the amount invested. Value and income from investment products may be adversely affected by exchange rates, interest rates, or other factors. Past performance of a particular investment product is not indicative of future results.

Analysts, economists, and strategists are paid in part by reference to the profitability of HSBC which includes investment banking revenues.

For disclosures in respect of any company mentioned in this report, please see the most recently published report on that company available at [www.hsbcnet.com/research](http://www.hsbcnet.com/research).

\* *HSBC Legal Entities are listed in the Disclaimer below.*

## Additional disclosures

- 1 This report is dated as at 23 June 2011.
- 2 All market data included in this report are dated as at close 24 June 2011, unless otherwise indicated in the report.
- 3 HSBC has procedures in place to identify and manage any potential conflicts of interest that arise in connection with its Research business. HSBC's analysts and its other staff who are involved in the preparation and dissemination of Research operate and have a management reporting line independent of HSBC's Investment Banking business. Information Barrier procedures are in place between the Investment Banking and Research businesses to ensure that any confidential and/or price sensitive information is handled in an appropriate manner.

# Disclaimer

\* Legal entities as at 04 March 2011

'UAE' HSBC Bank Middle East Limited, Dubai; 'HK' The Hongkong and Shanghai Banking Corporation Limited, Hong Kong; 'TW' HSBC Securities (Taiwan) Corporation Limited; 'CA' HSBC Securities (Canada) Inc, Toronto; HSBC Bank, Paris Branch; HSBC France; 'DE' HSBC Trinkaus & Burkhardt AG, Düsseldorf; 000 HSBC Bank (RR), Moscow; 'IN' HSBC Securities and Capital Markets (India) Private Limited, Mumbai; 'JP' HSBC Securities (Japan) Limited, Tokyo; 'EG' HSBC Securities Egypt SAE, Cairo; 'CN' HSBC Investment Bank Asia Limited, Beijing Representative Office; The Hongkong and Shanghai Banking Corporation Limited, Singapore Branch; The Hongkong and Shanghai Banking Corporation Limited, Seoul Securities Branch; The Hongkong and Shanghai Banking Corporation Limited, Seoul Branch; HSBC Securities (South Africa) (Pty) Ltd, Johannesburg; 'GR' HSBC Securities SA, Athens; HSBC Bank plc, London, Madrid, Milan, Stockholm, Tel Aviv; 'US' HSBC Securities (USA) Inc, New York; HSBC Yatirim Menkul Degerler AS, Istanbul; HSBC México, SA, Institución de Banca Múltiple, Grupo Financiero HSBC; HSBC Bank Brasil SA – Banco Múltiple; HSBC Bank Australia Limited; HSBC Bank Argentina SA; HSBC Saudi Arabia Limited; The Hongkong and Shanghai Banking Corporation Limited, New Zealand Branch

## Issuer of report

### HSBC Bank plc

8 Canada Square

London, E14 5HQ, United Kingdom

Telephone: +44 20 7991 8888

Fax: +44 20 7992 4880

Website: [www.research.hsbc.com](http://www.research.hsbc.com)

In the UK this document has been issued and approved by HSBC Bank plc ("HSBC") for the information of its Clients (as defined in the Rules of FSA) and those of its affiliates only. It is not intended for Retail Clients in the UK. If this research is received by a customer of an affiliate of HSBC, its provision to the recipient is subject to the terms of business in place between the recipient and such affiliate.

HSBC Securities (USA) Inc. accepts responsibility for the content of this research report prepared by its non-US foreign affiliate. All U.S. persons receiving and/or accessing this report and wishing to effect transactions in any security discussed herein should do so with HSBC Securities (USA) Inc. in the United States and not with its non-US foreign affiliate, the issuer of this report.

In Singapore, this publication is distributed by The Hongkong and Shanghai Banking Corporation Limited, Singapore Branch for the general information of institutional investors or other persons specified in Sections 274 and 304 of the Securities and Futures Act (Chapter 289) ("SFA") and accredited investors and other persons in accordance with the conditions specified in Sections 275 and 305 of the SFA. This publication is not a prospectus as defined in the SFA. It may not be further distributed in whole or in part for any purpose. The Hongkong and Shanghai Banking Corporation Limited Singapore Branch is regulated by the Monetary Authority of Singapore. Recipients in Singapore should contact a "Hongkong and Shanghai Banking Corporation Limited, Singapore Branch" representative in respect of any matters arising from, or in connection with this report. In Australia, this publication has been distributed by The Hongkong and Shanghai Banking Corporation Limited (ABN 65 117 925 970, AFSL 301737) for the general information of its "wholesale" customers (as defined in the Corporations Act 2001). Where distributed to retail customers, this research is distributed by HSBC Bank Australia Limited (AFSL No. 232595). These respective entities make no representations that the products or services mentioned in this document are available to persons in Australia or are necessarily suitable for any particular person or appropriate in accordance with local law. No consideration has been given to the particular investment objectives, financial situation or particular needs of any recipient. This publication is distributed in New Zealand by The Hongkong and Shanghai Banking Corporation Limited, New Zealand Branch.

This publication has been distributed in Japan by HSBC Securities (Japan) Limited. It may not be further distributed, in whole or in part, for any purpose. In Hong Kong, this document has been distributed by The Hongkong and Shanghai Banking Corporation Limited in the conduct of its Hong Kong regulated business for the information of its institutional and professional customers; it is not intended for and should not be distributed to retail customers in Hong Kong. The Hongkong and Shanghai Banking Corporation Limited makes no representations that the products or services mentioned in this document are available to persons in Hong Kong or are necessarily suitable for any particular person or appropriate in accordance with local law. All inquiries by such recipients must be directed to The Hongkong and Shanghai Banking Corporation Limited. This document is not and should not be construed as an offer to sell or the solicitation of an offer to purchase or subscribe for any investment.

In Korea, this publication is distributed by The Hongkong and Shanghai Banking Corporation Limited, Seoul Securities Branch ("HBAP SLS") for the general information of professional investors specified in Article 9 of the Financial Investment Services and Capital Markets Act ("FSCMA"). This publication is not a prospectus as defined in the FSCMA. It may not be further distributed in whole or in part for any purpose. HBAP SLS is regulated by the Financial Services Commission and the Financial Supervisory Service of Korea. HSBC has based this document on information obtained from sources it believes to be reliable but which it has not independently verified; HSBC makes no guarantee, representation or warranty and accepts no responsibility or liability as to its accuracy or completeness. HSBC is under no duty to update the information contained herein. The opinions contained within the report are based upon publicly available information at the time of publication and are subject to change without notice.

Nothing herein excludes or restricts any duty or liability to a customer which HSBC has under the Financial Services and Markets Act 2000 or under the Rules of FSA. A recipient who chooses to deal with any person who is not a representative of HSBC in the UK will not enjoy the protections afforded by the UK regulatory regime. Past performance is not necessarily a guide to future performance. The value of any investment or income may go down as well as up and you may not get back the full amount invested. Where an investment is denominated in a currency other than the local currency of the recipient of the research report, changes in the exchange rates may have an adverse effect on the value, price or income of that investment. In case of investments for which there is no recognised market it may be difficult for investors to sell their investments or to obtain reliable information about its value or the extent of the risk to which it is exposed.

HSBC Bank plc is registered in England No 14259, is authorised and regulated by the Financial Services Authority and is a member of the London Stock Exchange.

© Copyright. HSBC Bank plc 2011. ALL RIGHTS RESERVED. No part of this publication may be reproduced, stored in a retrieval system, or transmitted, on any form or by any means, electronic, mechanical, photocopying, recording, or otherwise, without the prior written permission of HSBC Bank plc. MICA (P) 208/04/2011 and MICA (P) 040/04/2011