

NAG Library Chapter Introduction

e04 – Minimizing or Maximizing a Function

Contents

1	Scope of the Chapter	3
2	Background to the Problems	3
2.1	Types of Optimization Problems	3
2.1.1	Unconstrained minimization	3
2.1.2	Nonlinear least-squares problems	3
2.1.3	Minimization subject to bounds on the variables	3
2.1.4	Minimization subject to linear constraints	4
2.1.5	Minimization subject to nonlinear constraints	4
2.1.6	Minimization subject to bounds on the objective function	4
2.2	Geometric Representation and Terminology	5
2.2.1	Gradient vector	5
2.2.2	Hessian matrix	6
2.2.3	Jacobian matrix; matrix of constraint normals	6
2.3	Sufficient Conditions for a Solution	6
2.3.1	Unconstrained minimization	6
2.3.2	Minimization subject to bounds on the variables	6
2.3.3	Linearly-constrained minimization	7
2.3.4	Nonlinearly-constrained minimization	8
2.4	Background to Optimization Methods	8
2.4.1	One-dimensional optimization	8
2.4.2	Methods for unconstrained optimization	9
2.4.3	Methods for nonlinear least-squares problems	9
2.4.4	Methods for handling constraints	9
2.5	Scaling	10
2.5.1	Transformation of variables	10
2.5.2	Scaling the objective function	11
2.5.3	Scaling the constraints	11
2.6	Analysis of Computed Results	11
2.6.1	Convergence criteria	11
2.6.2	Checking results	11
2.6.3	Monitoring progress	12
2.6.4	Confidence intervals for least-squares solutions	12
3	Optional Facilities	13
3.1	Control of Printed Output	13
3.2	Memory Management	14
3.3	Reading Optional Argument Values From a File	14
3.4	Method of Setting Optional Arguments	14
4	Recommendations on Choice and Use of Available Functions	15
4.1	Service Functions	15

4.2	Function Evaluations at Infeasible Points	15
4.3	Related Problems	16
4.4	Choosing Between Variant Functions for Some Problems	16
5	Decision Trees	16
6	Index	18
7	Functions Withdrawn or Scheduled for Withdrawal	20
8	References	20

1 Scope of the Chapter

An optimization problem involves minimizing a function (called the **objective function**) of several variables, possibly subject to restrictions on the values of the variables defined by a set of **constraint functions**. Most functions in the Library are concerned with function **minimization** only, since the problem of maximizing a given objective function $F(x)$ is equivalent to minimizing $-F(x)$. Some functions allow you to specify whether you are solving a minimization or maximization problem, carrying out the required transformation of the objective function in the latter case.

This introduction is only a brief guide to the subject of optimization designed for the casual user. Anyone with a difficult or protracted problem to solve will find it beneficial to consult a more detailed text, such as Gill *et al.* (1981) or Fletcher (1987).

If you are unfamiliar with the mathematics of the subject you may find some sections difficult at first reading; if so, you should **concentrate** on Sections 2.1, 2.2, 2.5, 2.6 and 4.

2 Background to the Problems

2.1 Types of Optimization Problems

The solution of optimization problems by a single, all-purpose, method is cumbersome and inefficient. Optimization problems are therefore classified into particular categories, where each category is defined by the properties of the objective and constraint functions, as illustrated by some examples below.

Properties of Objective Function

Nonlinear
Sums of squares of nonlinear functions
Quadratic
Sums of squares of linear functions
Linear

Properties of Constraints

Nonlinear
Sparse linear
Linear
Bounds
None

For instance, a specific problem category involves the minimization of a nonlinear objective function subject to bounds on the variables. In the following sections we define the particular categories of problems that can be solved by functions contained in this chapter. Not every category is given special treatment in the current version of the Library; however, the long-term objective is to provide a comprehensive set of functions to solve problems in all such categories.

2.1.1 Unconstrained minimization

In unconstrained minimization problems there are no constraints on the variables. The problem can be stated mathematically as follows:

$$\underset{x}{\text{minimize}} F(x)$$

where $x \in R^n$, that is, $x = (x_1, x_2, \dots, x_n)^T$.

2.1.2 Nonlinear least-squares problems

Special consideration is given to the problem for which the function to be minimized can be expressed as a sum of squared functions. The least-squares problem can be stated mathematically as follows:

$$\underset{x}{\text{minimize}} \left\{ f^T f = \sum_{i=1}^m f_i^2(x) \right\}, \quad x \in R^n$$

where the i th element of the m -vector f is the function $f_i(x)$.

2.1.3 Minimization subject to bounds on the variables

These problems differ from the unconstrained problem in that at least one of the variables is subject to a simple bound (or restriction) on its value, e.g., $x_5 \leq 10$, but no constraints of a more general form are present.

The problem can be stated mathematically as follows:

$$\underset{x}{\text{minimize}} F(x), \quad x \in R^n$$

subject to $l_i \leq x_i \leq u_i$, for $i = 1, 2, \dots, n$.

This format assumes that upper and lower bounds exist on all the variables. By conceptually allowing $u_i = +\infty$ and $l_i = -\infty$ all the variables need not be restricted.

2.1.4 Minimization subject to linear constraints

A general linear constraint is defined as a constraint function that is linear in more than one of the variables, e.g., $3x_1 + 2x_2 \geq 4$. The various types of linear constraint are reflected in the following mathematical statement of the problem:

$$\underset{x}{\text{minimize}} F(x), \quad x \in R^n$$

subject to the

$$\begin{array}{ll} \text{equality constraints:} & a_i^T x = b_i \quad i = 1, 2, \dots, m_1; \\ \text{inequality constraints:} & a_i^T x \geq b_i \quad i = m_1 + 1, m_1 + 2, \dots, m_2; \\ & a_i^T x \leq b_i \quad i = m_2 + 1, m_2 + 2, \dots, m_3; \\ \text{range constraints:} & s_j \leq a_i^T x \leq t_j \quad i = m_3 + 1, m_3 + 2, \dots, m_4; \\ & j = 1, 2, \dots, m_4 - m_3; \\ \text{bounds constraints:} & l_i \leq x_i \leq u_i \quad i = 1, 2, \dots, n \end{array}$$

where each a_i is a vector of length n ; b_i , s_j and t_j are constant scalars; and any of the categories may be empty.

Although the bounds on x_i could be included in the definition of general linear constraints, we prefer to distinguish between them for reasons of computational efficiency.

If $F(x)$ is a linear function, the linearly-constrained problem is termed a linear programming problem (LP); if $F(x)$ is a quadratic function, the problem is termed a quadratic programming problem (QP). For further discussion of LP and QP problems, including the dual formulation of such problems, see Dantzig (1963).

2.1.5 Minimization subject to nonlinear constraints

A problem is included in this category if at least one constraint function is nonlinear, e.g., $x_1^2 + x_3 + x_4 - 2 \geq 0$. The mathematical statement of the problem is identical to that for the linearly-constrained case, except for the addition of the following constraints:

$$\begin{array}{ll} \text{equality constraints:} & c_i(x) = 0 \quad i = 1, 2, \dots, m_5; \\ \text{inequality constraints:} & c_i(x) \geq 0 \quad i = m_5 + 1, m_5 + 2, \dots, m_6; \\ \text{range constraints:} & v_j \leq c_i(x) \leq w_j \quad i = m_6 + 1, m_6 + 2, \dots, m_7, \\ & j = 1, 2, \dots, m_7 - m_6 \end{array}$$

where each c_i is a nonlinear function; v_j and w_j are constant scalars; and any category may be empty. Note that we do not include a separate category for constraints of the form $c_i(x) \leq 0$, since this is equivalent to $-c_i(x) \geq 0$.

Although the general linear constraints could be included in the definition of nonlinear constraints, again we prefer to distinguish between them for reasons of computational efficiency.

If $F(x)$ is a nonlinear function, the nonlinearly-constrained problem is termed a nonlinear programming problem (NLP). For further discussion of NLP problems, see Gill *et al.* (1981) or Fletcher (1987).

2.1.6 Minimization subject to bounds on the objective function

In all of the above problem categories it is assumed that

$$a \leq F(x) \leq b$$

where $a = -\infty$ and $b = +\infty$. Problems in which a and/or b are finite can be solved by adding an extra

constraint of the appropriate type (i.e., linear or nonlinear) depending on the form of $F(x)$. Further advice is given in Section 4.2.

2.2 Geometric Representation and Terminology

To illustrate the nature of optimization problems it is useful to consider the following example in two dimensions:

$$F(x) = e^{x_1} (4x_1^2 + 2x_2^2 + 4x_1x_2 + 2x_2 + 1).$$

(This function is used as the example function in the documentation for the unconstrained functions.)

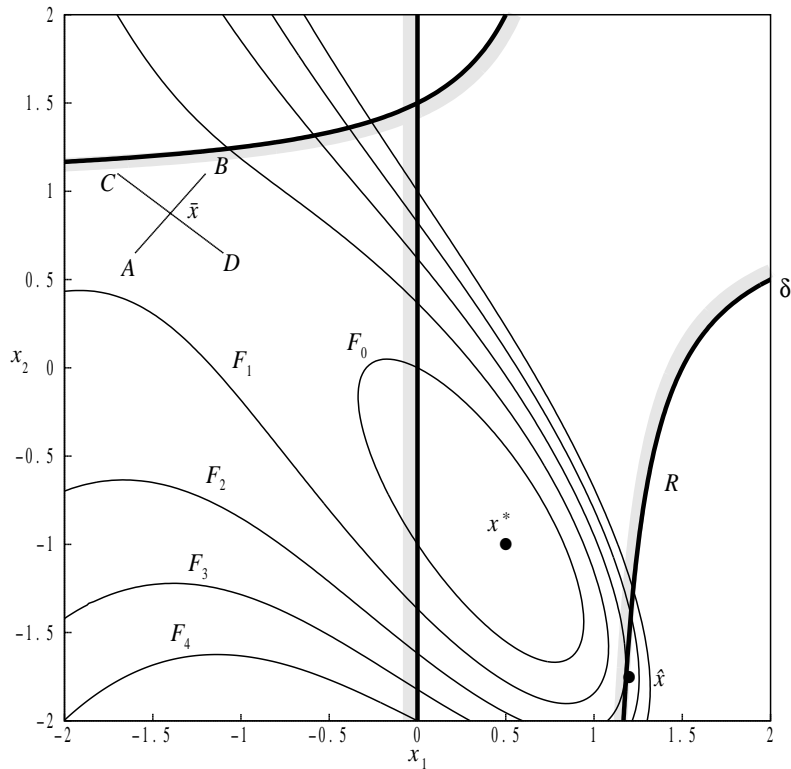


Figure 1

Figure 1 is a contour diagram of $F(x)$. The contours labelled F_0, F_1, \dots, F_4 are isovalue contours, or lines along which the function $F(x)$ takes specific constant values. The point $x^* = (\frac{1}{2}, -1)^T$ is a **local unconstrained minimum**, that is, the value of $F(x^*)$ ($= 0$) is less than at all the neighbouring points. A function may have several such minima. The lowest of the local minima is termed a **global minimum**. In the problem illustrated in Figure 1, x^* is the only local minimum. The point \bar{x} is said to be a **saddle point** because it is a minimum along the line AB, but a maximum along CD.

If we add the constraint $x_1 \geq 0$ (a simple bound) to the problem of minimizing $F(x)$, the solution remains unaltered. In Figure 1 this constraint is represented by the straight line passing through $x_1 = 0$, and the shading on the line indicates the unacceptable region (i.e., $x_1 < 0$). The region in R^n satisfying the constraints of an optimization problem is termed the **feasible region**. A point satisfying the constraints is defined as a **feasible point**.

If we add the nonlinear constraint $c_1(x) : x_1 + x_2 - x_1x_2 - \frac{3}{2} \geq 0$, represented by the curved shaded line in Figure 1, then x^* is not a feasible point because $c_1(x^*) < 0$. The solution of the new constrained problem is $\hat{x} \simeq (1.1825, -1.7397)^T$, the feasible point with the smallest function value (where $F(\hat{x}) \simeq 3.0607$).

2.2.1 Gradient vector

The vector of first partial derivatives of $F(x)$ is called the **gradient vector**, and is denoted by $g(x)$, i.e.,

$$g(x) = \left[\frac{\partial F(x)}{\partial x_1}, \frac{\partial F(x)}{\partial x_2}, \dots, \frac{\partial F(x)}{\partial x_n} \right]^T.$$

For the function illustrated in Figure 1,

$$g(x) = \begin{bmatrix} F(x) + e^{x_1}(8x_1 + 4x_2) \\ e^{x_1}(4x_2 + 4x_1 + 2) \end{bmatrix}.$$

The gradient vector is of importance in optimization because it must be zero at an unconstrained minimum of any function with continuous first derivatives.

2.2.2 Hessian matrix

The matrix of second partial derivatives of a function is termed its **Hessian matrix**. The Hessian matrix of $F(x)$ is denoted by $G(x)$, and its (i, j) th element is given by $\partial^2 F(x)/\partial x_i \partial x_j$. If $F(x)$ has continuous second derivatives, then $G(x)$ must be positive semi-definite at any unconstrained minimum of F .

2.2.3 Jacobian matrix; matrix of constraint normals

In nonlinear least-squares problems, the matrix of first partial derivatives of the vector-valued function $f(x)$ is termed the **Jacobian matrix** of $f(x)$ and its (i, j) th component is $\partial f_i/\partial x_j$.

The vector of first partial derivatives of the constraint $c_i(x)$ is denoted by

$$a_i(x) = \left[\frac{\partial c_i(x)}{\partial x_1}, \frac{\partial c_i(x)}{\partial x_2}, \dots, \frac{\partial c_i(x)}{\partial x_n} \right]^T.$$

The matrix whose columns are the vectors $\{a_i\}$ is termed the **matrix of constraint normals**. At a point \hat{x} , the vector $a_i(\hat{x})$ is orthogonal (normal) to the iso-value contour of $c_i(x)$ passing through \hat{x} ; this relationship is illustrated for a two-dimensional function in Figure 2.

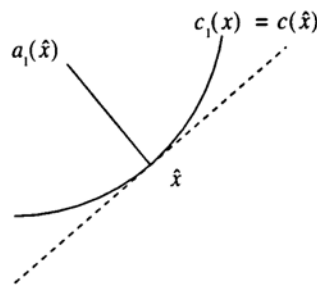


Figure 2

Note that if $c_i(x)$ is a linear constraint involving $a_i^T x$, then its vector of first partial derivatives is simply the vector a_i .

2.3 Sufficient Conditions for a Solution

All nonlinear functions will be assumed to have continuous second derivatives in the neighbourhood of the solution.

2.3.1 Unconstrained minimization

The following conditions are sufficient for the point x^* to be an unconstrained local minimum of $F(x)$:

- (i) $\|g(x^*)\| = 0$; and
- (ii) $G(x^*)$ is positive-definite,

where $\|g\|$ denotes the Euclidean length of g .

2.3.2 Minimization subject to bounds on the variables

At the solution of a bounds-constrained problem, variables which are not on their bounds are termed **free variables**. If it is known in advance which variables are on their bounds at the solution, the problem can be solved as an unconstrained problem in just the free variables; thus, the sufficient conditions for a solution are similar to those for the unconstrained case, applied only to the free variables.

Sufficient conditions for a feasible point x^* to be the solution of a bounds-constrained problem are as follows:

- (i) $\|\bar{g}(x^*)\| = 0$; and
- (ii) $\bar{G}(x^*)$ is positive-definite; and
- (iii) $g_j(x^*) < 0, x_j = u_j; g_j(x^*) > 0, x_j = l_j$,

where $\bar{g}(x)$ is the gradient of $F(x)$ with respect to the free variables, and $\bar{G}(x)$ is the Hessian matrix of $F(x)$ with respect to the free variables. The extra condition (iii) ensures that $F(x)$ cannot be reduced by moving off one or more of the bounds.

2.3.3 Linearly-constrained minimization

For the sake of simplicity, the following description does not include a specific treatment of bounds or range constraints, since the results for general linear inequality constraints can be applied directly to these cases.

At a solution x^* , of a linearly-constrained problem, the constraints which hold as equalities are called the **active** or **binding** constraints. Assume that there are t active constraints at the solution x^* , and let \hat{A} denote the matrix whose columns are the columns of A corresponding to the active constraints, with \hat{b} the vector similarly obtained from b ; then

$$\hat{A}^T x^* = \hat{b}.$$

The matrix Z is defined as an $n \times (n - t)$ matrix satisfying:

$$\begin{aligned} \hat{A}^T Z &= 0; \\ Z^T Z &= I. \end{aligned}$$

The columns of Z form an orthogonal basis for the set of vectors orthogonal to the columns of \hat{A} .

Define

$$g_Z(x) = Z^T g(x), \text{ the } \mathbf{projected\ gradient\ vector} \text{ of } F(x);$$

$$G_Z(x) = Z^T G(x) Z, \text{ the } \mathbf{projected\ Hessian\ matrix} \text{ of } F(x).$$

At the solution of a linearly-constrained problem, the projected gradient vector must be zero, which implies that the gradient vector $g(x^*)$ can be written as a linear combination of the columns of \hat{A} , i.e.,

$g(x^*) = \sum_{i=1}^t \lambda_i^* \hat{a}_i = \hat{A} \lambda^*$. The scalar λ_i^* is defined as the **Lagrange multiplier** corresponding to the i th active constraint. A simple interpretation of the i th Lagrange multiplier is that it gives the gradient of $F(x)$ along the i th active constraint normal; a convenient definition of the Lagrange multiplier vector (although not a recommended method for computation) is:

$$\lambda^* = \left(\hat{A}^T \hat{A} \right)^{-1} \hat{A}^T g(x^*).$$

Sufficient conditions for x^* to be the solution of a linearly-constrained problem are:

- (i) x^* is feasible, and $\hat{A}^T x^* = \hat{b}$; and
- (ii) $\|g_Z(x^*)\| = 0$, or equivalently, $g(x^*) = \hat{A} \lambda^*$; and
- (iii) $G_Z(x^*)$ is positive-definite; and
- (iv) $\lambda_i^* > 0$ if λ_i^* corresponds to a constraint $\hat{a}_i^T x^* \geq \hat{b}_i$;
 $\lambda_i^* < 0$ if λ_i^* corresponds to a constraint $\hat{a}_i^T x^* \leq \hat{b}_i$.

The sign of λ_i^* is immaterial for equality constraints, which by definition are always active.

2.3.4 Nonlinearly-constrained minimization

For nonlinearly-constrained problems, much of the terminology is defined exactly as in the linearly-constrained case. The set of active constraints at x again means the set of constraints that hold as equalities at x , with corresponding definitions of \hat{c} and \hat{A} : the vector $\hat{c}(x)$ contains the active constraint functions, and the columns of $\hat{A}(x)$ are the gradient vectors of the active constraints. As before, Z is defined in terms of $\hat{A}(x)$ as a matrix such that:

$$\begin{aligned}\hat{A}^T Z &= 0; \\ Z^T Z &= I\end{aligned}$$

where the dependence on x has been suppressed for compactness.

The projected gradient vector $g_Z(x)$ is the vector $Z^T g(x)$. At the solution x^* of a nonlinearly-constrained problem, the projected gradient must be zero, which implies the existence of Lagrange multipliers corresponding to the active constraints, i.e., $g(x^*) = \hat{A}(x^*)\lambda^*$.

The **Lagrangian function** is given by:

$$L(x, \lambda) = F(x) - \lambda^T \hat{c}(x).$$

We define $g_L(x)$ as the gradient of the Lagrangian function; $G_L(x)$ as its Hessian matrix, and $\hat{G}_L(x)$ as its projected Hessian matrix, i.e., $\hat{G}_L = Z^T G_L Z$.

Sufficient conditions for x^* to be the solution of a nonlinearly-constrained problem are:

- (i) x^* is feasible, and $\hat{c}(x^*) = 0$; and
- (ii) $\|g_Z(x^*)\| = 0$, or, equivalently, $g(x^*) = \hat{A}(x^*)\lambda^*$; and
- (iii) $\hat{G}_L(x^*)$ is positive-definite; and
- (iv) $\lambda_i^* > 0$ if λ_i^* corresponds to a constraint of the form $\hat{c}_i \geq 0$.

The sign of λ_i^* is immaterial for equality constraints, which by definition are always active.

Note that condition (ii) implies that the projected gradient of the Lagrangian function must also be zero at x^* , since the application of Z^T annihilates the matrix $\hat{A}(x^*)$.

2.4 Background to Optimization Methods

All the algorithms contained in this chapter generate an iterative sequence $\{x^{(k)}\}$ that converges to the solution x^* in the limit, except for some special problem categories (i.e., linear and quadratic programming). To terminate computation of the sequence, a convergence test is performed to determine whether the current estimate of the solution is an adequate approximation. The convergence tests are discussed in Section 2.6.

Most of the methods construct a sequence $\{x^{(k)}\}$ satisfying:

$$x^{(k+1)} = x^{(k)} + \alpha^{(k)} p^{(k)},$$

where the vector $p^{(k)}$ is termed the **direction of search**, and $\alpha^{(k)}$ is the **steplength**. The steplength $\alpha^{(k)}$ is chosen so that $F(x^{(k+1)}) < F(x^{(k)})$ and is computed using one of the techniques for one-dimensional optimization referred to in Section 2.4.1.

2.4.1 One-dimensional optimization

The Library contains two special functions for minimizing a function of a single variable. Both functions are based on safeguarded polynomial approximation. One function requires function evaluations only and fits a quadratic polynomial whilst the other requires function and gradient evaluations and fits a cubic polynomial. See Section 4.1 of Gill *et al.* (1981).

2.4.2 Methods for unconstrained optimization

The distinctions among methods arise primarily from the need to use varying levels of information about derivatives of $F(x)$ in defining the search direction. We describe three basic approaches to unconstrained problems, which may be extended to other problem categories. Since a full description of the methods would fill several volumes, the discussion here can do little more than allude to the processes involved, and direct you to other sources for a full explanation.

(a) Newton-type Methods (Modified Newton Methods)

Newton-type methods use the Hessian matrix $G(x^{(k)})$, or a finite-difference approximation to $G(x^{(k)})$, to define the search direction. The functions in the Library either require a function that computes the elements of $G(x^{(k)})$ directly, or they approximate $G(x^{(k)})$ by finite-differences.

Newton-type methods are the most powerful methods available for general problems and will find the minimum of a quadratic function in one iteration. See Sections 4.4 and 4.5.1 of Gill *et al.* (1981).

(b) Quasi-Newton Methods

Quasi-Newton methods approximate the Hessian $G(x^{(k)})$ by a matrix $B^{(k)}$ which is modified at each iteration to include information obtained about the curvature of F along the current search direction $p^{(k)}$. Although not as robust as Newton-type methods, quasi-Newton methods can be more efficient because $G(x^{(k)})$ is not computed directly, or approximated by finite-differences. Quasi-Newton methods minimize a quadratic function in n iterations, where n is the number of variables. See Section 4.5.2 of Gill *et al.* (1981).

(c) Conjugate-Gradient Methods

Unlike Newton-type and quasi-Newton methods, conjugate-gradient methods do not require the storage of an n by n matrix and so are ideally suited to solve large problems. Conjugate-gradient type methods are not usually as reliable or efficient as Newton-type, or quasi-Newton methods. See Section 4.8.3 of Gill *et al.* (1981).

2.4.3 Methods for nonlinear least-squares problems

These methods are similar to those for unconstrained optimization, but exploit the special structure of the Hessian matrix to give improved computational efficiency.

Since

$$F(x) = \sum_{i=1}^m f_i^2(x)$$

the Hessian matrix $G(x)$ is of the form

$$G(x) = 2 \left(J(x)^T J(x) + \sum_{i=1}^m f_i(x) G_i(x) \right),$$

where $J(x)$ is the Jacobian matrix of $f(x)$, and $G_i(x)$ is the Hessian matrix of $f_i(x)$.

In the neighbourhood of the solution, $\|f(x)\|$ is often small compared to $\|J(x)^T J(x)\|$ (for example, when $f(x)$ represents the goodness-of-fit of a nonlinear model to observed data). In such cases, $2J(x)^T J(x)$ may be an adequate approximation to $G(x)$, thereby avoiding the need to compute or approximate second derivatives of $\{f_i(x)\}$. See Section 4.7 of Gill *et al.* (1981).

2.4.4 Methods for handling constraints

Bounds on the variables are dealt with by fixing some of the variables on their bounds and adjusting the remaining free variables to minimize the function. By examining estimates of the Lagrange multipliers it is possible to adjust the set of variables fixed on their bounds so that eventually the bounds active at the solution should be correctly identified. This type of method is called an **active set method**. One feature

of such methods is that, given an initial feasible point, all approximations $x^{(k)}$ are feasible. This approach can be extended to general linear constraints. At a point, x , the set of constraints which hold as equalities being used to predict, or approximate, the set of active constraints is called the **working set**.

Nonlinear constraints are more difficult to handle. If at all possible, it is usually beneficial to avoid including nonlinear constraints during the formulation of the problem. The methods currently implemented in the Library handle nonlinearly constrained problems by transforming them into a sequence of quadratic programming problems. A feature of such methods is that $x^{(k)}$ is not guaranteed to be feasible except in the limit, and this is certainly true of the functions currently in the Library. See Chapter 6, particularly Sections 6.4 and 6.5, of Gill *et al.* (1981).

Anyone interested in a detailed description of methods for optimization should consult the references.

2.5 Scaling

Scaling (in a broadly defined sense) often has a significant influence on the performance of optimization methods. Since convergence tolerances and other criteria are necessarily based on an implicit definition of ‘small’ and ‘large’, problems with unusual or unbalanced scaling may cause difficulties for some algorithms. Although there are currently no user-callable scaling functions in the Library, scaling is automatically performed by default in the functions which solve sparse LP, QP or NLP problems and in some newer dense solver functions. The following sections present some general comments on problem scaling.

2.5.1 Transformation of variables

One method of scaling is to transform the variables from their original representation, which may reflect the physical nature of the problem, to variables that have certain desirable properties in terms of optimization. It is generally helpful for the following conditions to be satisfied:

- (i) the variables are all of similar magnitude in the region of interest;
- (ii) a fixed change in any of the variables results in similar changes in $F(x)$. Ideally, a unit change in any variable produces a unit change in $F(x)$;
- (iii) the variables are transformed so as to avoid cancellation error in the evaluation of $F(x)$.

Normally, you should restrict yourself to linear transformations of variables, although occasionally nonlinear transformations are possible. The most common such transformation (and often the most appropriate) is of the form

$$x_{\text{new}} = Dx_{\text{old}},$$

where D is a diagonal matrix with constant coefficients. Our experience suggests that more use should be made of the transformation

$$x_{\text{new}} = Dx_{\text{old}} + v,$$

where v is a constant vector.

Consider, for example, a problem in which the variable x_3 represents the position of the peak of a Gaussian curve to be fitted to data for which the extreme values are 150 and 170; therefore x_3 is known to lie in the range 150–170. One possible scaling would be to define a new variable \bar{x}_3 , given by

$$\bar{x}_3 = \frac{x_3}{170}.$$

A better transformation, however, is given by defining \bar{x}_3 as

$$\bar{x}_3 = \frac{x_3 - 160}{10}.$$

Frequently, an improvement in the accuracy of evaluation of $F(x)$ can result if the variables are scaled before the functions to evaluate $F(x)$ are coded. For instance, in the above problem just mentioned of Gaussian curve-fitting, x_3 may always occur in terms of the form $(x_3 - x_m)$, where x_m is a constant representing the mean peak position.

2.5.2 Scaling the objective function

The objective function has already been mentioned in the discussion of scaling the variables. The solution of a given problem is unaltered if $F(x)$ is multiplied by a positive constant, or if a constant value is added to $F(x)$. It is generally preferable for the objective function to be of the order of unity in the region of interest; thus, if in the original formulation $F(x)$ is always of the order of 10^{+5} (say), then the value of $F(x)$ should be multiplied by 10^{-5} when evaluating the function within an optimization function. If a constant is added or subtracted in the computation of $F(x)$, usually it should be omitted, i.e., it is better to formulate $F(x)$ as $x_1^2 + x_2^2$ rather than as $x_1^2 + x_2^2 + 1000$ or even $x_1^2 + x_2^2 + 1$. The inclusion of such a constant in the calculation of $F(x)$ can result in a loss of significant figures.

2.5.3 Scaling the constraints

A ‘well scaled’ set of constraints has two main properties. Firstly, each constraint should be well-conditioned with respect to perturbations of the variables. Secondly, the constraints should be balanced with respect to each other, i.e., all the constraints should have ‘equal weight’ in the solution process.

The solution of a linearly- or nonlinearly-constrained problem is unaltered if the i th constraint is multiplied by a positive weight w_i . At the approximation of the solution determined by a Library function, any active linear constraints will (in general) be satisfied ‘exactly’ (i.e., to within the tolerance defined by *machine precision*) if they have been properly scaled. This is in contrast to any active nonlinear constraints, which will not (in general) be satisfied ‘exactly’ but will have ‘small’ values (for example, $\hat{c}_1(x^*) = 10^{-8}$, $\hat{c}_2(x^*) = -10^{-6}$, and so on). In general, this discrepancy will be minimized if the constraints are weighted so that a unit change in x produces a similar change in each constraint.

A second reason for introducing weights is related to the effect of the size of the constraints on the Lagrange multiplier estimates and, consequently, on the active set strategy. This means that different sets of weights may cause an algorithm to produce different sequences of iterates. Additional discussion is given in Gill *et al.* (1981).

2.6 Analysis of Computed Results

2.6.1 Convergence criteria

The convergence criteria inevitably vary from function to function, since in some cases more information is available to be checked (for example, is the Hessian matrix positive-definite?), and different checks need to be made for different problem categories (for example, in constrained minimization it is necessary to verify whether a trial solution is feasible). Nonetheless, the underlying principles of the various criteria are the same; in non-mathematical terms, they are:

- (i) is the sequence $\{x^{(k)}\}$ converging?
- (ii) is the sequence $\{F^{(k)}\}$ converging?
- (iii) are the necessary and sufficient conditions for the solution satisfied?

The decision as to whether a sequence is converging is necessarily speculative. The criterion used in the present functions is to assume convergence if the relative change occurring between two successive iterations is less than some prescribed quantity. Criterion (iii) is the most reliable but often the conditions cannot be checked fully because not all the required information may be available.

2.6.2 Checking results

Little *a priori* guidance can be given as to the quality of the solution found by a nonlinear optimization algorithm, since no guarantees can be given that the methods will not fail. Therefore, you should always check the computed solution even if the function reports success. Frequently a ‘solution’ may have been found even when the function does not report a success. The reason for this apparent contradiction is that the function needs to assess the accuracy of the solution. This assessment is not an exact process and consequently may be unduly pessimistic. Any ‘solution’ is in general only an approximation to the exact solution, and it is possible that the accuracy you have specified is too stringent.

Further confirmation can be sought by trying to check whether or not convergence tests are almost satisfied, or whether or not some of the sufficient conditions are nearly satisfied. When it is thought that a function has returned a value of **fail.code** other than **NE_NOERROR** only because the requirements for ‘success’ were too stringent it may be worth restarting with increased convergence tolerances.

For nonlinearly-constrained problems, check whether the solution returned is feasible, or nearly feasible; if not, the solution returned is not an adequate solution.

Confidence in a solution may be increased by resolving the problem with a different initial approximation to the solution. See Section 8.3 of Gill *et al.* (1981) for further information.

2.6.3 Monitoring progress

Many of the functions in the chapter have facilities to allow you to monitor the progress of the minimization process, and you are encouraged to make use of these facilities. Monitoring information can be a great aid in assessing whether or not a satisfactory solution has been obtained, and in indicating difficulties in the minimization problem or in the ability of the function to cope with the problem.

The behaviour of the function, the estimated solution and first derivatives can help in deciding whether a solution is acceptable and what to do in the event of a return with a **fail.code** other than **NE_NOERROR**.

2.6.4 Confidence intervals for least-squares solutions

When estimates of the parameters in a nonlinear least-squares problem have been found, it may be necessary to estimate the variances of the parameters and the fitted function. These can be calculated from the Hessian of $F(x)$ at the solution.

In many least-squares problems, the Hessian is adequately approximated at the solution by $G = 2J^T J$ (see Section 2.4.3). The Jacobian, J , or a factorization of J is returned by all the comprehensive least-squares functions and, in addition, a function is available in the Library to estimate variances of the parameters following the use of most of the nonlinear least-squares functions, in the case that $G = 2J^T J$ is an adequate approximation.

Let H be the inverse of G , and S be the sum of squares, both calculated at the solution \bar{x} ; an unbiased estimate of the **variance** of the i th parameter x_i is

$$\text{var } \bar{x}_i = \frac{2S}{m-n} H_{ii}$$

and an unbiased estimate of the covariance of \bar{x}_i and \bar{x}_j is

$$\text{covar}(\bar{x}_i, \bar{x}_j) = \frac{2S}{m-n} H_{ij}.$$

If x^* is the true solution, then the $100(1 - \beta)\%$ **confidence interval** on \bar{x} is

$$\bar{x}_i - \sqrt{\text{var } \bar{x}_i} t_{(1-\beta/2, m-n)} < x_i^* < \bar{x}_i + \sqrt{\text{var } \bar{x}_i} t_{(1-\beta/2, m-n)}, \quad i = 1, 2, \dots, n$$

where $t_{(1-\beta/2, m-n)}$ is the $100(1 - \beta)/2$ percentage point of the t -distribution with $m - n$ degrees of freedom.

In the majority of problems, the residuals f_i , for $i = 1, 2, \dots, m$, contain the difference between the values of a model function $\phi(z, x)$ calculated for m different values of the independent variable z , and the corresponding observed values at these points. The minimization process determines the parameters, or constants x , of the fitted function $\phi(z, x)$. For any value, \bar{z} , of the independent variable z , an unbiased estimate of the **variance** of ϕ is

$$\text{var } \phi = \frac{2S}{m-n} \sum_{i=1}^n \sum_{j=1}^n \left[\frac{\partial \phi}{\partial x_i} \right]_{\bar{z}} \left[\frac{\partial \phi}{\partial x_j} \right]_{\bar{z}} H_{ij}.$$

The $100(1 - \beta)\%$ **confidence interval** on F at the point \bar{z} is

$$\phi(\bar{z}, \bar{x}) - \sqrt{\text{var } \phi} t_{(\beta/2, m-n)} < \phi(\bar{z}, x^*) < \phi(\bar{z}, \bar{x}) + \sqrt{\text{var } \phi} t_{(\beta/2, m-n)}.$$

For further details on the analysis of least-squares solutions see Bard (1974) and Wolberg (1967).

3 Optional Facilities

The comments in this section do not apply to functions introduced at Mark 8, viz. `nag_opt_sparse_convex_qp_solve` (e04nqc), `nag_opt_sparse_nlp_solve` (e04vhc) and `nag_opt_nlp_solve` (e04wdc). For details of their optional facilities please refer to their individual documents.

The optimization functions of this chapter provide a range of optional facilities: these offer the possibility of fine control over many of the algorithmic arguments and the means of adjusting the level and nature of the printed results.

Control of these optional facilities is exercised by a structure of type `Nag_E04_Opt`, the members of the structure being optional input or output arguments to the function. After declaring the structure variable, which is named **options** in this manual, you must initialize the structure by passing its address in a call to the utility function `nag_opt_init` (e04xxc). Selected members of the structure may then be set to your required values and the address of the structure passed to the optimization function. Any member which has not been set by you will indicate to the optimization function that the default value should be used for this argument. A more detailed description of this process is given in Section 3.4.

Examples of optional arguments to the algorithms which may be altered from their default value are **linesearch_tol** or **optim_tol** (these control the accuracy to which the linesearch and final solution are computed, respectively), and **max_iter** (which limits the number of iterations the algorithm will perform). Certain members of **options** supply further details concerning the final results, for example the member pointer **state** gives the status of the constraints, while in the LP and QP solvers the member pointers **lambda** and **ax** also give the final values of the Lagrange multipliers and the linear constraints respectively.

The optimization process may sometimes terminate before a satisfactory answer has been found, for instance when the limit on the number of iterations has been reached. In such cases you may wish to re-enter the function making use of the information already obtained. Functions `nag_opt_conj_grad` (e04dgc), `nag_opt_lsq_no_deriv` (e04fcc) and `nag_opt_lsq_deriv` (e04gbc) can simply be re-entered but the functions `nag_opt_bounds_no_deriv` (e04jbc), `nag_opt_bounds_deriv` (e04kbc), `nag_opt_lp` (e04mfc), `nag_opt_lin_lsq` (e04ncc), `nag_opt_qp` (e04nfc), `nag_opt_sparse_convex_qp` (e04nkc), `nag_opt_nlp` (e04ucc), `nag_opt_nlin_lsq` (e04unc) and `nag_opt_nlp_solve` (e04wdc) have a structure member which needs to be set appropriately if the function is to make use of information from the previous call. The member is **init_state** in functions `nag_opt_bounds_no_deriv` (e04jbc) and `nag_opt_bounds_deriv` (e04kbc), and **start** in the other functions listed. (Please note that `nag_opt_bounds_no_deriv` (e04jbc) and `nag_opt_bounds_deriv` (e04kbc) are scheduled for withdrawal.)

3.1 Control of Printed Output

Results from the optimization process are printed by default on the `stdout` (standard output) stream. These include the results after each iteration and the final results at termination of the search process. The amount of detail printed out may be increased or decreased by setting the optional argument **print_level**, i.e., the structure member **print_level**. This member is an enum type, `Nag_PrintType`, and an example value is `Nag_Soln` which when assigned to **print_level** will cause the optimization function to print only the final result; all intermediate results printout is suppressed.

If the results printout is not in the desired form then it may be switched off, by setting **print_level** = `Nag_NoPrint`, or alternatively you can supply your own function to print out or make use of both the intermediate and final results. Such a function would be assigned to the pointer to function member **print_fun**; the user-defined function would then be called in preference to the NAG print function.

In addition to the results, the values of the arguments to the optimization function are printed out when the function is entered; the Boolean member **list** may be set to `Nag_FALSE` if this listing is not required.

Printing may be output to a named file rather than to `stdout` by providing the name of the file in the **options** character array member **outfile**. Error messages will still appear on `stderr`, if **fail.print** = `Nag_TRUE` or the **fail** argument is not supplied (see the Section 3.6 in the Essential Introduction for details of error handling within the library).

3.2 Memory Management

The **options** structure contains a number of pointers for the input of data and the output of results. The optimization functions will manage the allocation of memory to these pointers; when all calls to these functions have been completed then a utility function `nag_opt_free` (e04xzc) can be called by your program to free the NAG allocated memory which is no longer required.

If the calling function is part of a larger program then this utility function allows you to conserve memory by freeing the NAG allocated memory before the **options** structure goes out of scope. `nag_opt_free` (e04xzc) can free all NAG allocated memory in a single call, but it may also be used selectively. In this case the memory assigned to certain pointers may be freed leaving the remaining memory still available; pointers to this memory and the results it contains may then be passed to other functions in your program without passing the structure and all its associated memory.

Although the NAG C Library optimization functions will manage all memory allocation and deallocation, it may occasionally be necessary for you to allocate memory to the **options** structure from within the calling program before entering the optimization function.

An example of this is where you store information in a file from an optimization run and at a later date wish to use that information to solve a similar optimization problem or the same one under slightly changed conditions. The pointer **state**, for example, would need to be allocated memory by you before the status of the constraints could be assigned from the values in the file. The member **init_state** would need to be appropriately set for functions `nag_opt_bounds_no_deriv` (e04jbc) and `nag_opt_bounds_deriv` (e04kbc) and member **start** for functions `nag_opt_lp` (e04mfc) and `nag_opt_qp` (e04nfc). (Please note that `nag_opt_bounds_no_deriv` (e04jbc) and `nag_opt_bounds_deriv` (e04kbc) are scheduled for withdrawal.)

If you assign memory to a pointer within the **options** structure then the deallocation of this memory must also be performed by you; the utility function `nag_opt_free` (e04xzc) will only free memory allocated by NAG C Library optimization functions. When your allocated memory is freed using the standard C library function `free()` then the pointer should be set to **NULL** immediately afterwards; this will avoid possible confusion in the NAG memory management system if a NAG function is subsequently entered.

3.3 Reading Optional Argument Values From a File

Optional argument values may be placed in a file by you and the function `nag_opt_read` (e04xyc) used to read the file and assign the values to the **options** structure. This utility function permits optional argument values to be supplied in any order and altered without recompilation of the program. The values read are also checked before assignment to ensure they are in the correct range for the specified option. Pointers within the **options** structure cannot be assigned to using `nag_opt_read` (e04xyc).

3.4 Method of Setting Optional Arguments

The method of using and setting the optional arguments is:

- step 1 declare a structure of type `Nag_E04_Opt`.
- step 2 initialize the structure using `nag_opt_init` (e04xxc).
- step 3 assign values to the structure.
- step 4 pass the address of the structure to the optimization function.
- step 5 call `nag_opt_free` (e04xzc) to free any memory allocated by the optimization function.

If after step 4, it is wished to re-enter the optimization function, then step 3 can be returned to directly, i.e., step 5 need only be executed when all calls to the optimization function have been made.

At step 3, values can be assigned directly and/or by means of the option file reading function `nag_opt_read` (e04xyc). If values are only assigned from the options file then step 2 need not be performed as `nag_opt_read` (e04xyc) will automatically call `nag_opt_init` (e04xxc) if the structure has not been initialized.

4 Recommendations on Choice and Use of Available Functions

The choice of function depends on several factors: the type of problem (unconstrained, etc.); the level of derivative information available (function values only, etc.); your experience (there are easy-to-use versions of some functions); whether or not storage is a problem; and whether computational time has a high priority. Not all choices are catered for in the current version of the Library.

4.1 Service Functions

One of the most common errors in the use of optimization functions is that user-supplied functions do not evaluate the relevant partial derivatives correctly. Because exact gradient information normally enhances efficiency in all areas of optimization, you are encouraged to provide analytical derivatives whenever possible. However, mistakes in the computation of derivatives can result in serious and obscure run-time errors. Consequently, **service functions** are provided to perform an elementary check on the gradients you supplied. These functions are inexpensive to use in terms of the number of calls they require to user-supplied functions.

The appropriate checking functions are as follows:

Minimization function	Checking function(s)
nag_opt_bounds_2nd_deriv (e04lbc)	nag_opt_check_deriv (e04hcc) and nag_opt_check_2nd_deriv (e04hdc)
nag_opt_lsq_deriv (e04gbc)	nag_opt_lsq_check_deriv (e04yac)

It should be noted that functions nag_opt_nlp_sparse (e04ugc), nag_opt_sparse_nlp_solve (e04vhc) and nag_opt_nlp_solve (e04wdc) each incorporate a check on the gradients being supplied. This involves verifying the gradients at the first point that satisfies the linear constraints and bounds. There is also an option to perform a more reliable (but more expensive) check on the individual gradient elements being supplied. Note that the checks are not infallible.

A second type of service function computes a set of finite-differences to be used when approximating first derivatives. Such differences are required as input arguments by some functions that use only function evaluations.

nag_opt_lsq_covariance (e04ycc) estimates selected elements of the variance-covariance matrix for the computed regression parameters following the use of a nonlinear least-squares function.

nag_opt_estimate_deriv (e04xac) estimates the gradient and Hessian of a function at a point, given a function to calculate function values only, or estimates the Hessian of a function at a point, given a function to calculate function and gradient values.

4.2 Function Evaluations at Infeasible Points

All the functions for constrained problems will ensure that any evaluations of the objective function occur at points which **approximately** satisfy any **simple bounds** or **linear constraints**. Satisfaction of such constraints is only approximate because functions which estimate derivatives by finite-differences may require function evaluations at points which just violate such constraints even though the current iteration just satisfies them.

There is no attempt to ensure that the current iteration satisfies any nonlinear constraints. If you wish to prevent your objective function being evaluated outside some known region (where it may be undefined or not practically computable), you may try to confine the iteration within this region by imposing suitable simple bounds or linear constraints (but beware as this may create new local minima where these constraints are active).

Note also that some functions allow you to return the argument (**comm** → **flag**) with a negative value to force an immediate clean exit from the minimization function when the objective function (or nonlinear constraints where appropriate) cannot be evaluated. Please note that nag_opt_sparse_convex_qp_solve (e04nqc), nag_opt_sparse_nlp_solve (e04vhc) and nag_opt_nlp_solve (e04wdc) use the user-supplied function **imode** instead of **comm** → **flag**.

4.3 Related Problems

Apart from the standard types of optimization problem, there are other related problems which can be solved by functions in this or other chapters of the Library.

nag_ip_bb (h02bbc) solves **dense integer LP** problems.

Several functions in Chapter f04 solve **linear least-squares problems**, i.e., minimize $\sum_{i=1}^m r_i(x)^2$ where

$$r_i(x) = b_i - \sum_{j=1}^n a_{ij}x_j.$$

nag_lone_fit (e02gac) solves an overdetermined system of linear equations in the l_1 norm, i.e., minimizes

$$\sum_{i=1}^m |r_i(x)|, \text{ with } r_i \text{ as above.}$$

nag_linf_fit (e02gcc) solves an overdetermined system of linear equations in the l_∞ norm, i.e., minimizes $\max_i |r_i(x)|$, with r_i as above.

4.4 Choosing Between Variant Functions for Some Problems

As evidenced by the wide variety of functions available in Chapter e04, it is clear that no single algorithm can solve all optimization problems. It is important to try to match the problem to the most suitable function, and that is what the decision trees in Section 5 help to do.

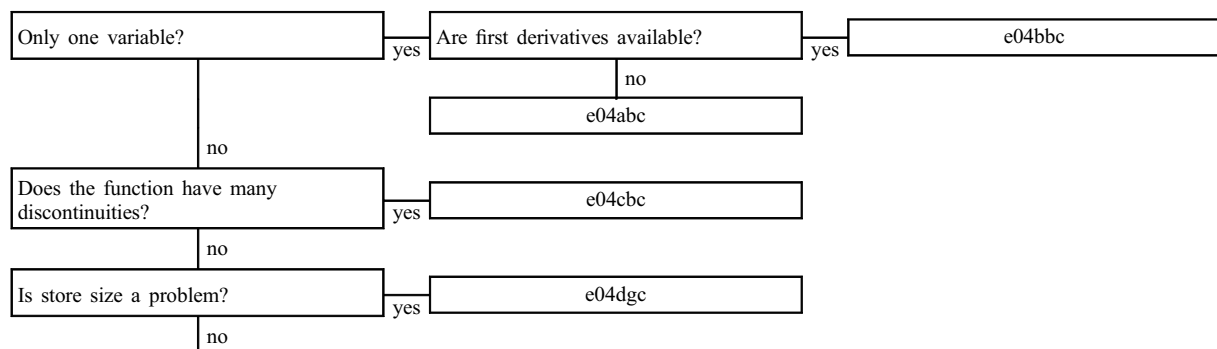
Sometimes in Chapter e04 more than one function is available to solve precisely the same minimization problem. Thus, for example, the general nonlinear programming functions nag_opt_nlp (e04ucc) and nag_opt_nlp_solve (e04wdc) have very similar argument lists and are based on similar methods. Experience shows that although both functions can usually solve the same problem and get similar results, sometimes one function will be faster, sometimes one might find a different local minimum to the other, or, in difficult cases, one function may obtain a solution when the other one fails.

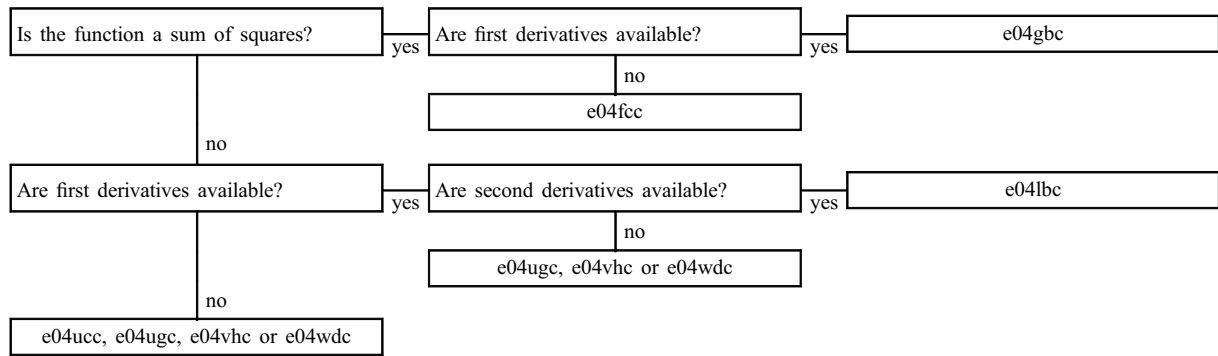
After using one of these functions, if the results obtained are unacceptable for some reason, it may be worthwhile trying the other function instead. In the absence of any other information, in the first instance you are recommended to try using nag_opt_nlp (e04ucc), and if that proves unsatisfactory, try using nag_opt_nlp_solve (e04wdc). Although the algorithms used are very similar, the two functions each have slightly different optional arguments which may allow the course of the computation to be altered in different ways.

Other pairs of functions which solve the same kind of problem are nag_opt_sparse_convex_qp (e04nkc) or nag_opt_sparse_convex_qp_solve (e04nqc), for sparse quadratic or linear programming problems, and nag_opt_nlp_sparse (e04ugc) or nag_opt_nlp_solve (e04vhc), for sparse nonlinear programming. In these cases the argument lists are not so similar as nag_opt_nlp (e04ucc) or nag_opt_nlp_solve (e04wdc), but the same considerations apply.

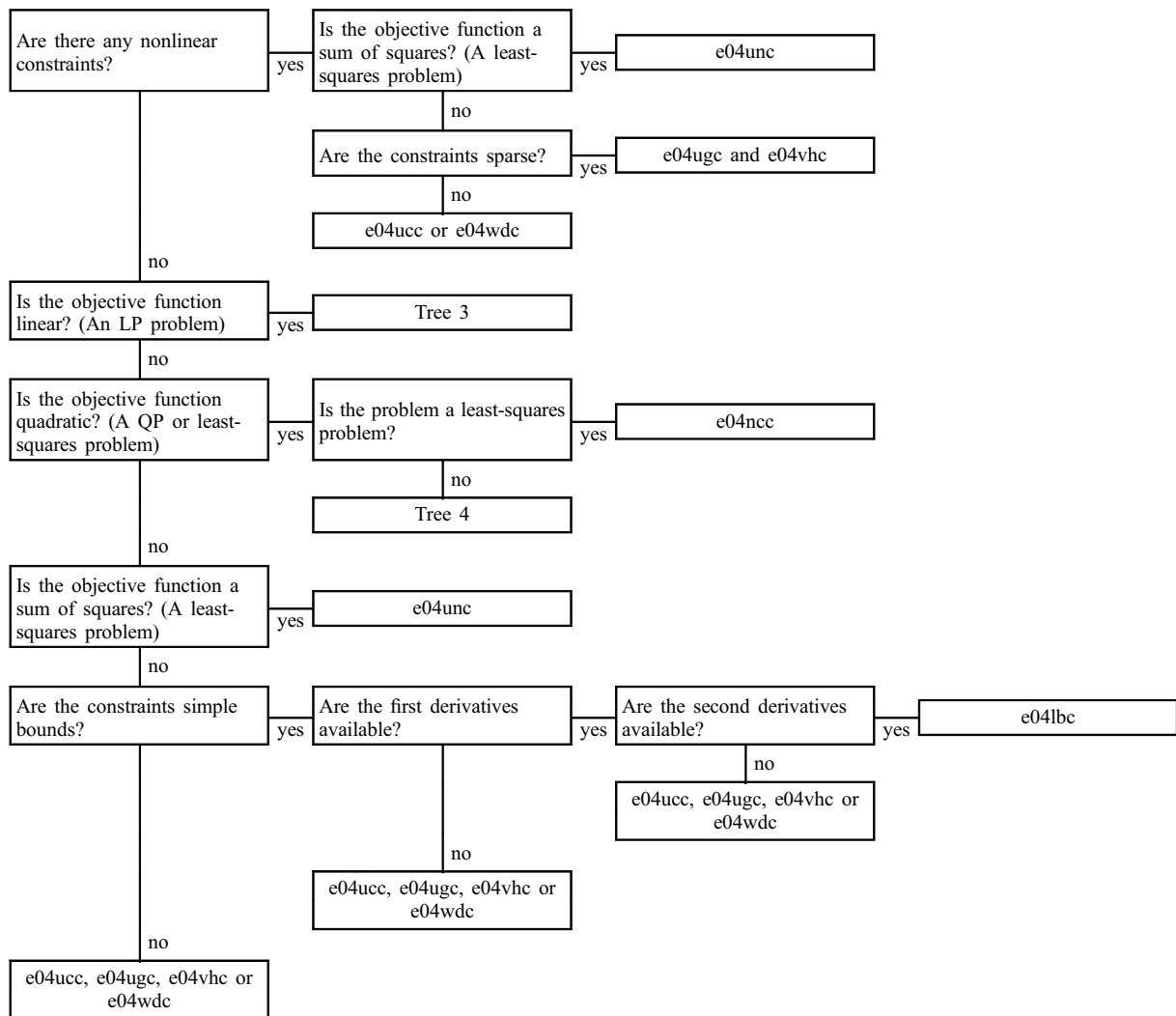
5 Decision Trees

Tree 1: Selection chart for unconstrained problems

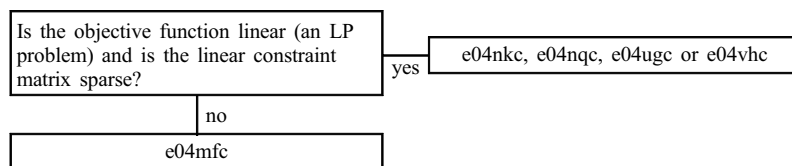




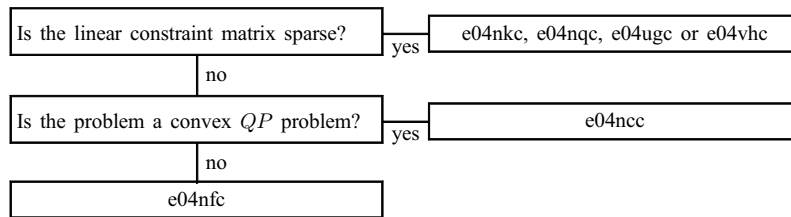
Tree 2: Selection chart for bound-constrained, linearly-constrained and nonlinearly-constrained problems



Tree 3: Linear programming



Tree 4: Quadratic programming



6 Index

- Constrained minimum of a sum of squares, nonlinear constraints,
using function values and optionally first derivatives, sequential QP method,
(dense) nag_opt_nlin_lsq (e04unc)
- Convex QP problem or linearly-constrained linear least-squares problem (dense)
..... nag_opt_lin_lsq (e04ncc)
- Linear programming (LP) problem (dense) nag_opt_lp (e04mfc)
- LP or QP problem (sparse) nag_opt_sparse_convex_qp (e04nkc)
- LP or QP problem (sparse) (recommended – see Section 4.4)
..... nag_opt_sparse_convex_qp_solve (e04nqc)
- Minimum, function of one variable,
using first derivative nag_opt_one_var_deriv (e04bbc)
using function values only nag_opt_one_var_no_deriv (e04abc)
- Minimum, function of several variables, nonlinear constraints,
using function values and optionally first derivatives, sequential QP method,
dense nag_opt_nlp_solve (e04wdc)
dense (recommended – see Section 4.4) nag_opt_nlp (e04ucc)
sparse nag_opt_sparse_nlp_solve (e04vhc)
sparse (recommended – see Section 4.4) nag_opt_nlp_sparse (e04ugc)
- Minimum, function of several variables, simple bounds,
using first and second derivatives, modified Newton algorithm
..... nag_opt_bounds_2nd_deriv (e04lbc)
- Option setting,
initialization function nag_opt_init (e04xxc)
memory freeing function nag_opt_free (e04xzc)
read options from a text file nag_opt_read (e04xyc)
- Quadratic programming (QP) problem (dense) nag_opt_qp (e04nfc)
- Service functions:
check user’s function for calculating:
 Jacobian of first derivatives nag_opt_lsq_check_deriv (e04yac)
convert MPSX data file defining LP or QP problem to format required by
nag_opt_sparse_convex_qp_solve (e04nqc) nag_opt_sparse_mps_read (e04mzc)
convert MPSX data file defining LP or QP problem to format required by nag_opt_sparse_convex_qp
(e04nkc) nag_opt_sparse_mps_free (e04myc)
covariance matrix for nonlinear least-squares problem nag_opt_lsq_covariance (e04ycc)

- determine Jacobian sparsity structure before a call of `nag_opt_sparse_nlp_solve` (e04vhc)
 `nag_opt_sparse_nlp_jacobian` (e04vjc)
- estimate gradient and/or Hessian of a function `nag_opt_estimate_deriv` (e04xac)
- Initialization function for:
- `nag_opt_nlp_solve` (e04wdc) `nag_opt_nlp_init` (e04wcc)
 - `nag_opt_sparse_convex_qp_solve` (e04nqc) `nag_opt_sparse_convex_qp_init` (e04npc)
 - `nag_opt_sparse_nlp_solve` (e04vhc) `nag_opt_sparse_nlp_init` (e04vgc)
- retrieve integer optional argument values used by:
- `nag_opt_nlp_solve` (e04wdc) `nag_opt_nlp_option_get_integer` (e04wkc)
 - `nag_opt_sparse_convex_qp_solve` (e04nqc)
 `nag_opt_sparse_convex_qp_option_get_integer` (e04nxc)
 - `nag_opt_sparse_nlp_solve` (e04vhc) `nag_opt_sparse_nlp_option_get_integer` (e04vrc)
- retrieve real optional argument values used by:
- `nag_opt_nlp_solve` (e04wdc) `nag_opt_nlp_option_get_double` (e04wlc)
 - `nag_opt_sparse_convex_qp_solve` (e04nqc)
 `nag_opt_sparse_convex_qp_option_get_double` (e04nyc)
 - `nag_opt_sparse_nlp_solve` (e04vhc) `nag_opt_sparse_nlp_option_get_double` (e04vsc)
- supply integer optional argument values to:
- `nag_opt_nlp_solve` (e04wdc) `nag_opt_nlp_option_set_integer` (e04wgc)
 - `nag_opt_sparse_convex_qp_solve` (e04nqc)
 `nag_opt_sparse_convex_qp_option_set_integer` (e04ntc)
 - `nag_opt_sparse_nlp_solve` (e04vhc) `nag_opt_sparse_nlp_option_set_integer` (e04vmc)
- supply optional argument values from external file for:
- `nag_opt_nlp_solve` (e04wdc) `nag_opt_nlp_option_set_file` (e04wec)
 - `nag_opt_sparse_convex_qp_solve` (e04nqc)
 `nag_opt_sparse_convex_qp_option_set_file` (e04nrc)
 - `nag_opt_sparse_nlp_solve` (e04vhc) `nag_opt_sparse_nlp_option_set_file` (e04vkc)
- supply optional argument values to:
- `nag_opt_nlp_solve` (e04wdc) `nag_opt_nlp_option_set_string` (e04wfc)
 - `nag_opt_sparse_convex_qp_solve` (e04nqc)
 `nag_opt_sparse_convex_qp_option_set_string` (e04nsc)
 - `nag_opt_sparse_nlp_solve` (e04vhc) `nag_opt_sparse_nlp_option_set_string` (e04vlc)
- supply real optional argument values to:
- `nag_opt_nlp_solve` (e04wdc) `nag_opt_nlp_option_set_double` (e04whc)
 - `nag_opt_sparse_convex_qp_solve` (e04nqc)
 `nag_opt_sparse_convex_qp_option_set_double` (e04nuc)
 - `nag_opt_sparse_nlp_solve` (e04vhc) `nag_opt_sparse_nlp_option_set_double` (e04vnc)
- Unconstrained minimum, function of several variables:
 using first derivatives, pre-conditioned conjugate gradient algorithm
 `nag_opt_conj_grad` (e04dgc)
- Unconstrained minimum, function of several variables (comprehensive):
 using function values only, simplex algorithm,
 easy-to-use `nag_opt_simplex_easy` (e04cbc)
- Unconstrained minimum of a sum of squares:
 using first derivatives,
 combined Gauss–Newton and quasi-Newton algorithm `nag_opt_lsq_deriv` (e04gbc)
- Unconstrained minimum of a sum of squares (comprehensive):
 using function values only,
 combined Gauss–Newton and modified Newton algorithm `nag_opt_lsq_no_deriv` (e04fcc)

7 Functions Withdrawn or Scheduled for Withdrawal

Withdrawn Function	Mark of Withdrawal	Replacement Function(s)
nag_opt_simplex (e04ccc)	11	nag_opt_simplex_easy (e04cbc)
nag_opt_check_deriv (e04hcc)	10	No longer required
nag_opt_check_2nd_deriv (e04hdc)	10	No longer required
nag_opt_bounds_no_deriv (e04jbc)	10	nag_opt_nlp_solve (e04wdc)
nag_opt_bounds_deriv (e04kbc)	10	nag_opt_nlp_solve (e04wdc)

8 References

- Bard Y (1974) *Nonlinear Parameter Estimation* Academic Press
- Dantzig G B (1963) *Linear Programming and Extensions* Princeton University Press
- Fletcher R (1987) *Practical Methods of Optimization* (2nd Edition) Wiley
- Gill P E and Murray W (ed.) (1974) *Numerical Methods for Constrained Optimization* Academic Press
- Gill P E, Murray W and Wright M H (1981) *Practical Optimization* Academic Press
- Murray W (ed.) (1972) *Numerical Methods for Unconstrained Optimization* Academic Press
- Wolberg J R (1967) *Prediction Analysis* Van Nostrand
-